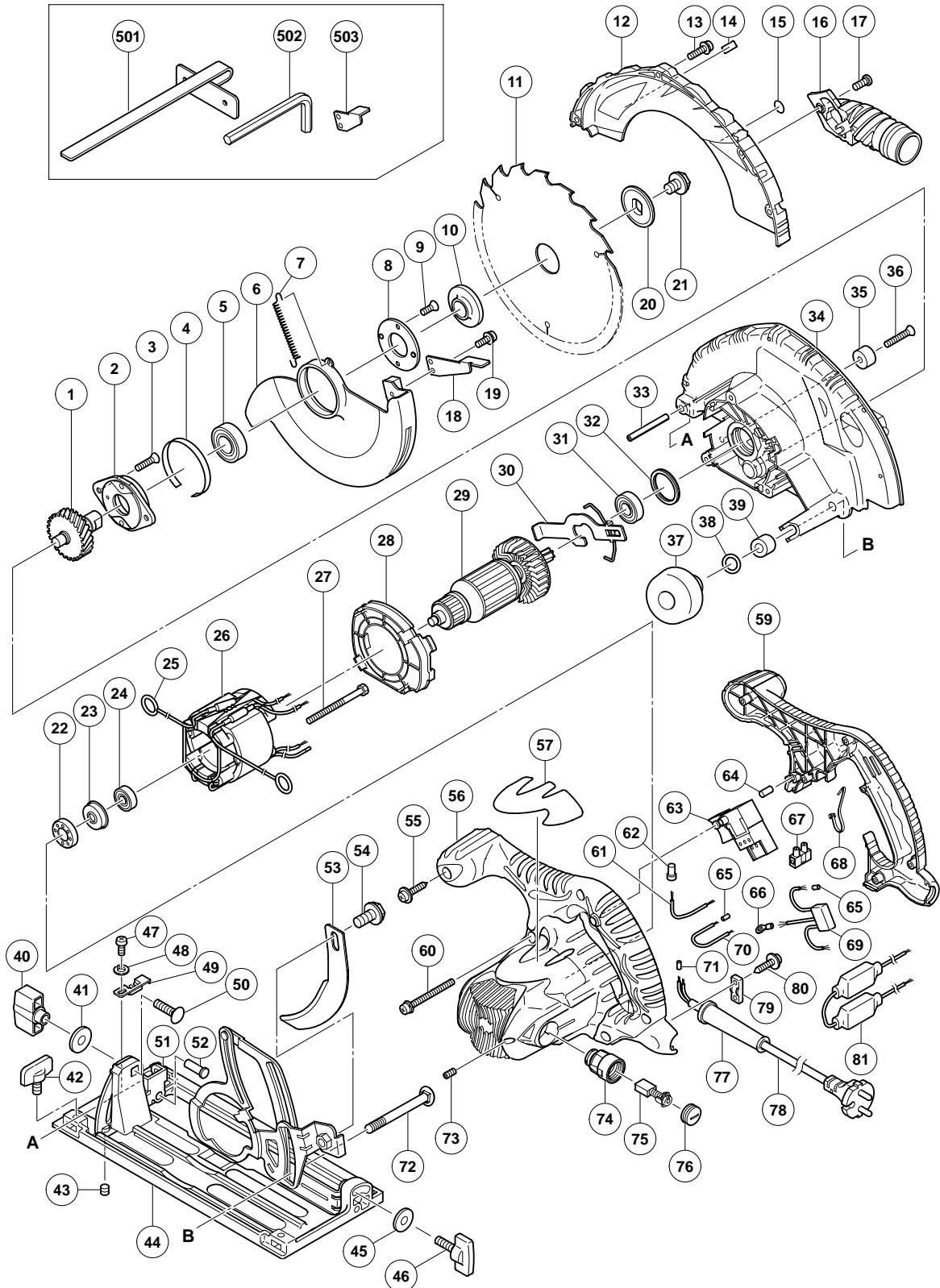


ELECTRIC TOOL PARTS LIST

■ CIRCULAR SAW Model C 7BU2

2005 • 8 • 30

(E1)



PARTS

C 7BU2

ITEM NO.	CODE NO.	DESCRIPTION	NO. USED	REMARKS
1	302-988	SPINDLE AND GEAR SET	1	
2	302-433	BEARING HOLDER	1	
3	992-013	SEAL LOCK FLAT HD. SCREW M5X14	2	
4	961-807	BUSHING	1	
5	600-3VV	BALL BEARING 6003VVCMP2L	1	
6	324-661	SAFETY COVER	1	
7	303-512	RETURN SPRING	1	
8	302-435	BEARING COVER	1	
9	990-430	SEAL LOCK FLAT HD. SCREW M4X10	2	
10	302-476	WASHER (A)	1	
11	324-668	TCT SAW BLADE 190MM-D30 HOLE-NT18	1	
12	324-654	SAW COVER	1	
13	305-691	MACHINE SCREW (W/WASHERS) M4X14 (BLACK)	4	
14		MODEL NAME PLATE	1	
15		NAME PLATE (BRAKE)	1	
16	324-669	DUST COLLECTOR	1	
17	324-139	SPECIAL BOLT	1	
18	302-464	KNOB	1	
19	304-043	MACHINE SCREW (W/WASHERS) M4X10 (BLACK)	1	
20	302-423	WASHER (B)	1	
21	324-662	HEX. SOCKET HD. BOLT M8X15.5	1	
22	325-060	RUBBER BUSHING	1	
23	322-089	BEARING BUSHING	1	
24	608-VVM	BALL BEARING 608VVC2PS2L	1	
25	930-703	BRUSH TERMINAL	2	
*	26	340-445G	STATOR ASS'Y 110V	1 INCLUD. 25
*	26	340-425G	STATOR ASS'Y 230V	1 INCLUD. 25
	27	953-174	HEX. HD. TAPPING SCREW D5X55	2
	28	324-656	FAN GUIDE	1
*	29	360-726C	ARMATURE 110V	1
*	29	360-726E	ARMATURE 230V	1
	30	324-655	LOCK LEVER	1
	31	600-1VV	BALL BEARING 6001VVCMP2L	1
	32	958-130	RUBBER RING	1
	33	949-686	ROLL PIN D6X40 (10 PCS.)	1
	34	324-653	GEAR COVER ASS'Y	1 INCLUD. 32, 35, 36
	35	961-729	CUSHION	1
	36	949-794	FLAT HD. SCREW M6X20 (10 PCS.)	1
	37	324-660	KNOB	1
	38	676-531	O-RING (P-7)	1
	39	303-801	SLEEVE	1
	40	324-658	WING NUT M8	1
	41	949-433	BOLT WASHER M8 (10 PCS.)	1
	42	301-806	WING BOLT M6X15	1
	43	302-469	SLOTTED HD. SET SCREW (SEAL LOCK) M6X6	1
	44	324-672	BASE ASS'Y (FLUORINE)	1 INCLUD. 40, 41, 45-52
	45	949-425	WASHER M6 (10 PCS.)	1
	46	302-459	WING BOLT M6X17	1
	47	949-214	MACHINE SCREW M4X6 (10 PCS.)	1
	48	949-453	SPRING WASHER M4 (10 PCS.)	1
	49	324-659	GUIDE PIECE	1

