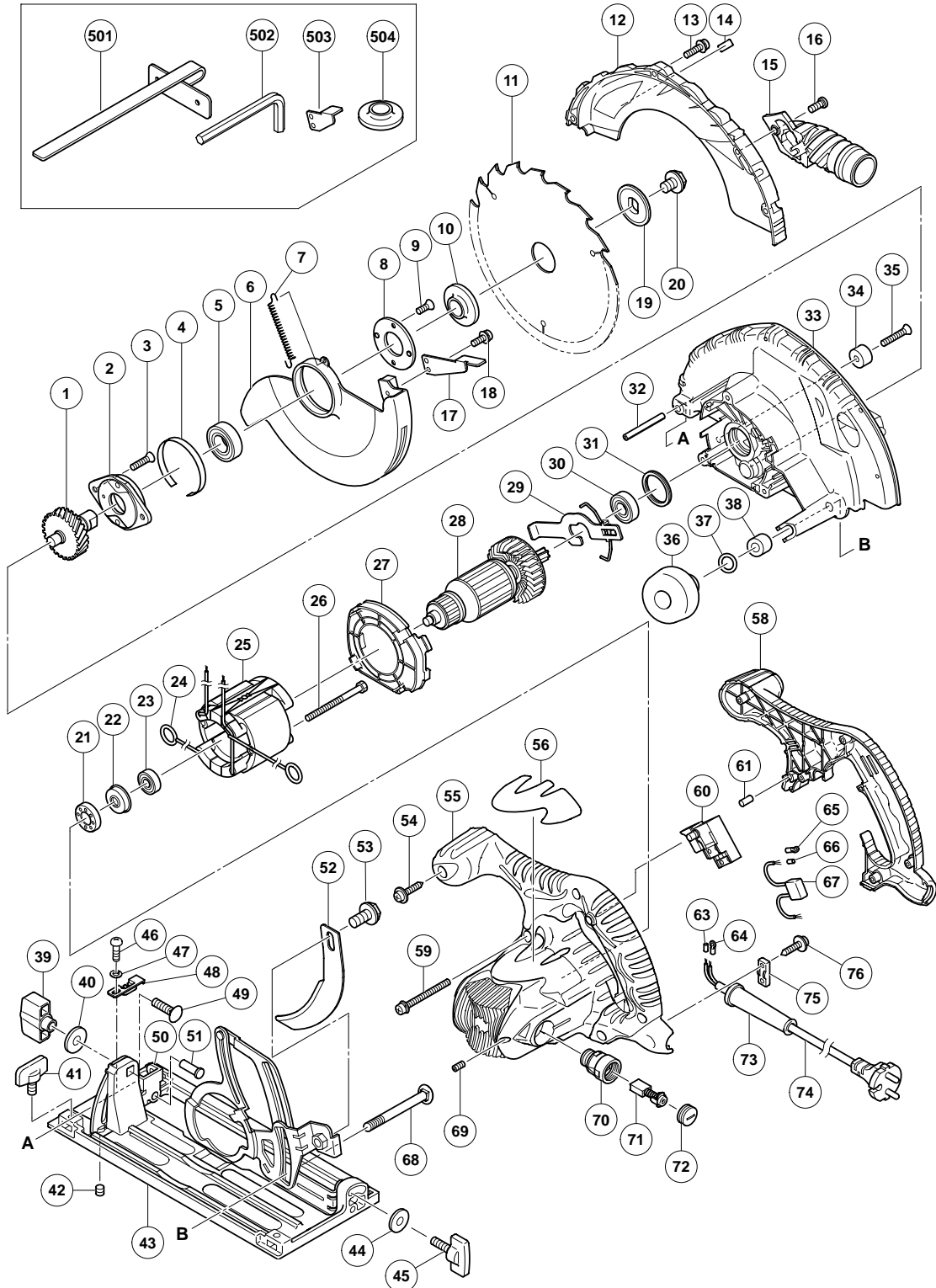


ELECTRIC TOOL PARTS LIST

■ CIRCULAR SAW Model C 7U2

2005 • 8 • 30

(E1)



PARTS

C 7U2

ITEM NO.	CODE NO.	DESCRIPTION	NO. USED	REMARKS
1	302-988	SPINDLE AND GEAR SET	1	
2	302-433	BEARING HOLDER	1	
3	992-013	SEAL LOCK FLAT HD. SCREW M5X14	2	
4	961-807	BUSHING	1	
5	600-3VV	BALL BEARING 6003VVCMP2L	1	
6	324-661	SAFETY COVER	1	
7	303-512	RETURN SPRING	1	
8	302-435	BEARING COVER	1	
9	990-430	SEAL LOCK FLAT HD. SCREW M4X10	2	
10	302-476	WASHER (A)	1	
11	324-668	TCT SAW BLADE 190MM-D30 HOLE-NT18	1	
12	324-654	SAW COVER	1	
13	305-691	MACHINE SCREW (W/WASHERS) M4X14 (BLACK)	4	
14		MODEL NAME PLATE	1	
15	324-669	DUST COLLECTOR	1	
16	324-139	SPECIAL BOLT	1	
17	302-464	KNOB	1	
18	304-043	MACHINE SCREW (W/WASHERS) M4X10 (BLACK)	1	
19	302-423	WASHER (B)	1	
20	324-662	HEX. SOCKET HD. BOLT M8X15.5	1	
21	325-060	RUBBER BUSHING	1	
22	322-089	BEARING BUSHING	1	
23	608-VVM	BALL BEARING 608VVC2PS2L	1	
24	930-703	BRUSH TERMINAL	2	
* 25	340-640C	STATOR ASS'Y 110V	1	INCLUD. 24
* 25	340-640E	STATOR ASS'Y 230V	1	INCLUD. 24
26	953-174	HEX. HD. TAPPING SCREW D5X55	2	
27	324-656	FAN GUIDE	1	
* 28	360-727C	ARMATURE 110V	1	
* 28	360-727E	ARMATURE 230V	1	
29	324-655	LOCK LEVER	1	
30	600-1VV	BALL BEARING 6001VVCMP2L	1	
31	958-130	RUBBER RING	1	
32	949-686	ROLL PIN D6X40 (10 PCS.)	1	
33	324-653	GEAR COVER ASS'Y	1	INCLUD. 31, 34, 35
34	961-729	CUSHION	1	
35	949-794	FLAT HD. SCREW M6X20 (10 PCS.)	1	
36	324-660	KNOB	1	
37	676-531	O-RING (P-7)	1	
38	303-801	SLEEVE	1	
39	324-658	WING NUT M8	1	
40	949-433	BOLT WASHER M8 (10 PCS.)	1	
41	301-806	WING BOLT M6X15	1	
42	302-469	SLOTTED HD. SET SCREW (SEAL LOCK) M6X6	1	
43	324-657	BASE ASS'Y	1	INCLUD. 39, 40, 44-51
44	949-425	WASHER M6 (10 PCS.)	1	
45	302-459	WING BOLT M6X17	1	
46	949-214	MACHINE SCREW M4X6 (10 PCS.)	1	
47	949-453	SPRING WASHER M4 (10 PCS.)	1	
48	324-659	GUIDE PIECE	1	
49	302-457	BOLT (SQUARE) M8X30	1	

PARTS

ITEM NO.	CODE NO.	DESCRIPTION	NO. USED	REMARKS
50	308-479	BEVEL PLATE	1	
51	308-480	RIVET D6X17	2	
52	324-663	RIVING KNIFE	1	
53	324-664	HEX. SOCKET HD. BOLT M8X10	1	
54	301-653	TAPPING SCREW (W/FLANGE) D4X20 (BLACK)	5	
*	55	324-665	HOUSING ASS'Y	1 INCLUD. 69, 70
*	55	324-666	HOUSING ASS'Y	1 INCLUD. 69, 70 FOR SAF
	56		NAME PLATE	1
	58	324-667	HANDLE COVER	1
	59	302-434	MACHINE SCREW (W/WASHERS) M5X45 (BLACK)	3
*	60	963-756Z	SWITCH (2P PILLAR TYPE) W/SAFETY LOCK	1
*	60	302-470	SWITCH (C) (1P SCREW TYPE) W/O LOCK	1 FOR SAF
	61	946-362	BEARING LOCK	1
*	63	981-373	TUBE (D)	2 FOR CORD
*	64	980-063	TERMINAL	2 FOR CORD
*	65	930-804	TERMINAL M4.0 (10 PCS.)	2 FOR SAF
*	66	981-373	TUBE (D)	2 EXCEPT FOR SAF
	67	930-039	NOISE SUPPRESSOR	1
	68	316-444	DIAGONAL BOLT M8X105	1
	69	938-477	HEX. SOCKET SET SCREW M5X8	2
	70	958-900	BRUSH HOLDER	2
	71	999-043	CARBON BRUSH (1 PAIR)	2
	72	945-161	BRUSH CAP	2
	73	953-327	CORD ARMOR D8.8	1
*	74	500-234Z	CORD	1 (CORD ARMOR D8.8)
*	74	500-435Z	CORD	1 (CORD ARMOR D8.8) FOR GBR (230V)
*	74	500-461Z	CORD	1 (CORD ARMOR D8.8) FOR GBR (110V)
	75	937-631	CORD CLIP	1
	76	984-750	TAPPING SCREW (W/FLANGE) D4X16	2

STANDARD ACCESSORIES

ITEM NO.	CODE NO.	DESCRIPTION	NO. USED	REMARKS
501	302-756	GUIDE	1	
502	872-422	HEX. BAR WRENCH 6MM	1	
503	303-338	KNOB	1	
* 504	302-443	WASHER (A)	1	FOR FRA

OPTIONAL ACCESSORIES

ITEM NO.	CODE NO.	DESCRIPTION	NO. USED	REMARKS
601	317-848	GUIDE RAIL ADAPTER ASS'Y	1	INCLUD. 602-607
602	317-849	RAIL BAR	1	
603	317-850	BAR	1	
604	317-851	BAR	1	
605	301-806	WING BOLT M6X15	4	
606	949-237	MACHINE SCREW M5X12 (10 PCS.)	2	
607	949-454	SPRING WASHER M5 (10 PCS.)	2	