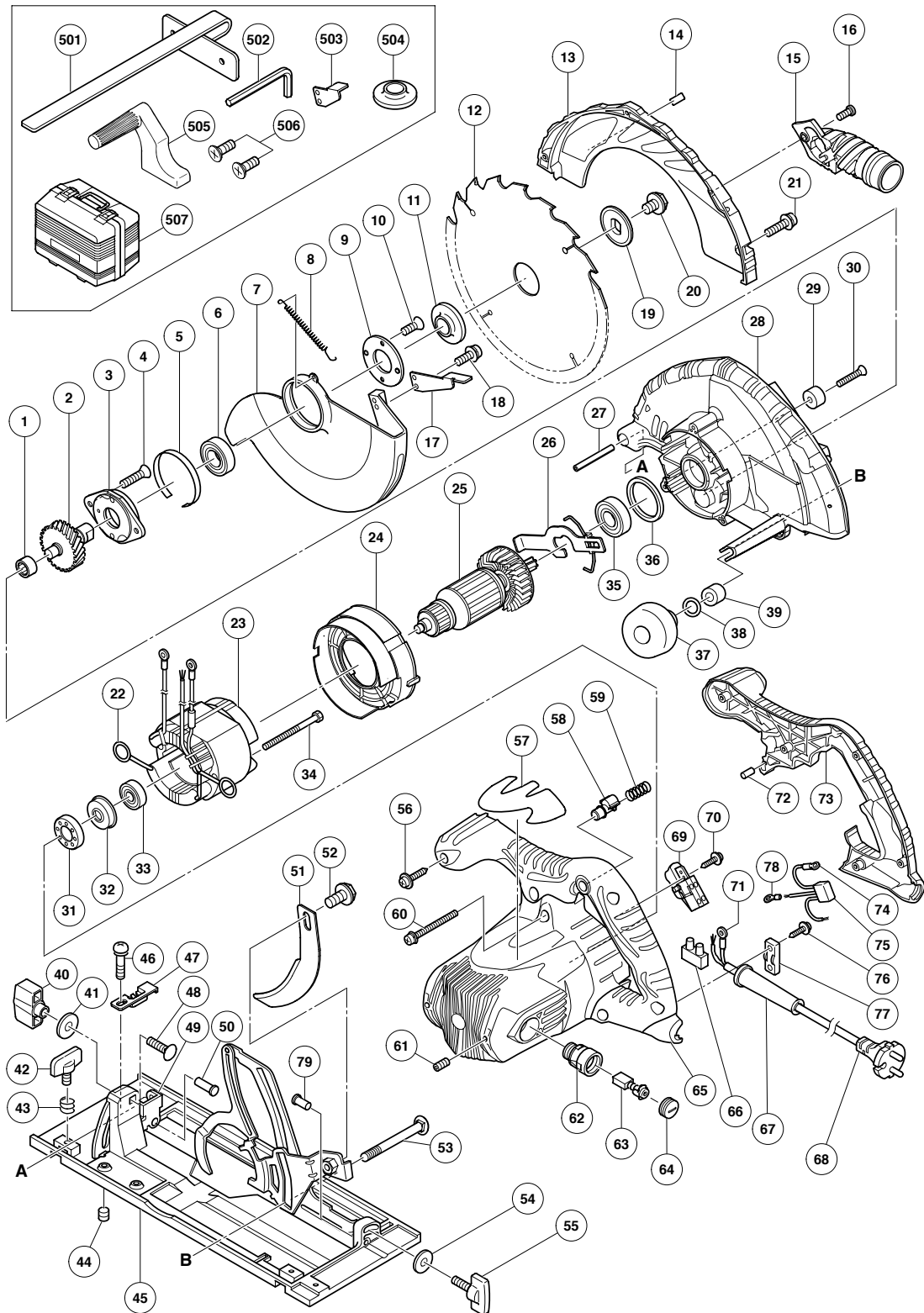


## ELECTRIC TOOL PARTS LIST

**CIRCULAR SAW**  
**Model C 9BU2**

**2005 · 11 · 30**  
**(E1)**



**PARTS**

C 9BU2

ITEM NO.	CODE NO.	DESCRIPTION	NO. USED	REMARKS
1	673-002	NEEDLE BEARING (HK1212)	1	
2	303-789	SPINDLE AND GEAR SET	1	
3	303-790	BEARING HOLDER	1	
4	303-797	SEAL LOCK FLAT HD. SCREW M6X14	2	
5	998-887	LINER	1	
6	620-3VV	BALL BEARING 6203VVCMP2L	1	
7	325-353	SAFETY COVER	1	
8	303-805	RETURN SPRING	1	
9	303-804	BEARING COVER	1	
10	992-013	SEAL LOCK FLAT HD. SCREW M5X14	2	
11	302-476	WASHER (A)	1	
* 12	303-809	TCT SAW BLADE 235MM-D15.9 HOLE-NT20	1	
* 12	303-810	TCT SAW BLADE 235MM-D30 HOLE-NT20	1	
13	325-354	SAW COVER	1	
14		HITACHI LABEL	1	
15	324-669	DUST COLLECTOR	1	
16	324-139	SPECIAL BOLT	1	
17	302-464	KNOB	1	
18	304-043	MACHINE SCREW (W/WASHERS) M4X10 (BLACK)	1	
19	302-423	WASHER (B)	1	
20	324-662	HEX. SOCKET HD. BOLT M8X15.5	1	
21	305-691	MACHINE SCREW (W/WASHERS) M4X14 (BLACK)	4	
22	937-623	BRUSH TERMINAL	2	
* 23	340-661C	STATOR ASS'Y 110V	1	INCLUD. 22
* 23	340-661E	STATOR ASS'Y 230V	1	INCLUD. 22
24	325-352	FAN GUIDE	1	
* 25	360-759C	ARMATURE 110V	1	
* 25	360-759E	ARMATURE 230V	1	
26	303-793	LOCK LEVER	1	
27	949-884	ROLL PIN D8X50 (10 PCS.)	1	
28	325-350	GEAR COVER	1	
29	961-729	CUSHION	1	
30	949-794	FLAT HD. SCREW M6X20 (10 PCS.)	1	
31	325-356	RUBBER BUSHING	1	
32	325-355	BEARING BUSHING	1	
33	600-0VV	BALL BEARING 6000VVCMP2L	1	
34	960-251	HEX. HD. TAPPING SCREW D5X65	2	
35	620-2VV	BALL BEARING 6202VVCMP2L	1	
36	303-792	RUBBER RING	1	
37	324-660	KNOB	1	
38	676-531	O-RING (P-7)	1	
39	303-801	SLEEVE	1	
40	324-658	WING NUT M8	1	
41	949-433	BOLT WASHER M8 (10 PCS.)	1	
42	301-806	WING BOLT M6X15	1	
43	947-859	LOCK SPRING	1	
44	302-469	SLOTTED HD. SET SCREW (SEAL LOCK) M6X6	1	
45	325-366	BASE ASS'Y	1	INCLUD. 40, 41, 46-50, 54, 55, 79
46	317-333	MACHINE SCREW (W/SP. WASHER) M4X6	1	
47	324-659	GUIDE PIECE	1	
48	302-457	BOLT (SQUARE) M8X30	1	



