

B53

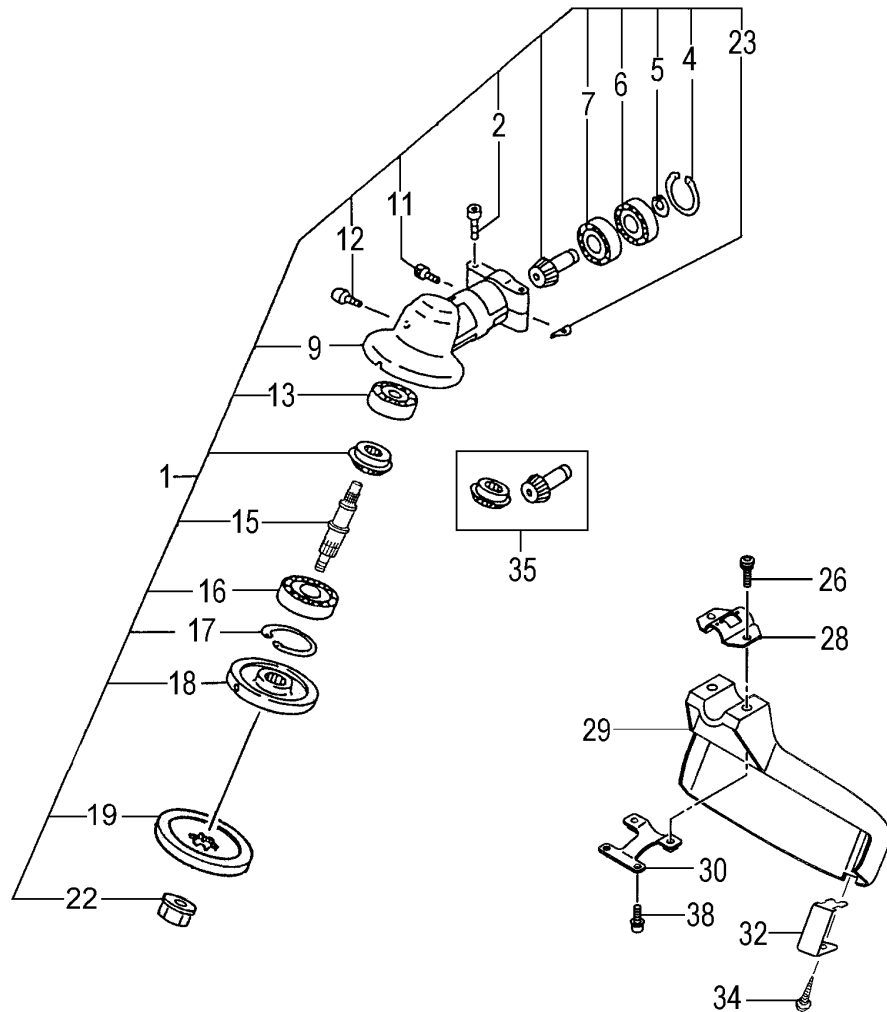
CG-GT

S e r i a l N o .

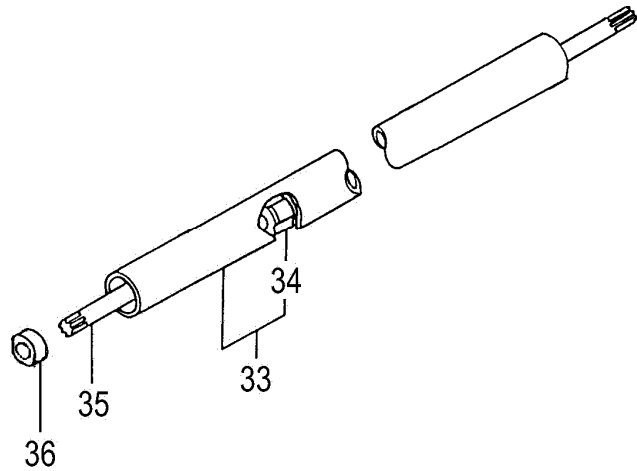
MPREF	MPHIN	MPNAM	MFMPG	MPQTY3	MFMP SRL2
		+++++++ MODEL:CGGT			+++++++
		B53-01 GEAR CASE			
001	300-37821-91	GEAR CASE ASSY 24			1
002	994-61050-254	HEX. HOLE BOLT 5X25/S			2
004	993-51022-002	STOP RING C-22, INNER			1
005	993-57010-002	STOP RING OUTER 10			1
006	999-61690-002	BALL BEARING			1
007	999-61690-000	BALL BEARING 6900, 22MM/OD			1
009	300-38150-21	GEAR CASE 24			1
011	994-61050-124	HEX. HOLE BOLT 5X12S			1
012	316-38150-20	OILING BOLT			1
013	999-61609-000	BALL BEARING 609			1
015	304-3338R-20	GEAR SHAFT			1
016	999-61620-103	BALL BEARING 6201D, 32MM/OD			1
017	993-51032-002	STOP RING C-32, INNER			1
018	310-38150-20	CUTTER HOLDER			1
019	311-38150-20	CUTTER HOLDER CAP			1
022	313-38150-20	FIXING NUT M10X1.25			1
023	324-38150-20	GEAR CASE WASHER			1
026	994-81060-254	HEX. HOLE BUTTON SCREW 6X25S			2
028	442-37417-20	SAFETY GUARD BRACKET, 24 DIA.			1
029	441-38150-20	SAFETY COVER, 24 DIA.			1
030	445-38150-20	SAFETY GUARD HOLDER			1
032	797-38150-20	KNIFE			1
034	993-17052-002	TAPPING SCREW 5X20			1
035	301-38150-00	GEAR PINION SET SPARE			1
038	994-61050-124	HEX. HOLE BOLT 5X12S			2
		B53-02 OPERATION PIPE			
033	341-38466-80	DRIVE SHAFT PIPE 742L			1
034	347-38360-90	BUSH ASS'Y			3
035	036-38190-20	DRIVE SHAFT B 783L			1
036	347-38466-20	BUSH			1
		B53-03 TOOLS			
000	783-33832-90	NYLON HEAD/SURE TAP, M10-NUT			1
002	356-3383B-20	MOUNTING NUT L-M10X1.25			1
003	786-33830-20	CUTTING BODY			1
004	315-33830-20	SPECIAL NUT			1
005	793-33830-20	REEL SPRING			1
006	787-33830-20	SPOOL			1
007	789-33830-20	CUTTING BODY CAP			1
008	788-33830-20	EYELET			2
011	307-37307-20	WINDING PROTECTOR			1
		B53-03 LABELS			
002	929-38232-21	SYMBOL MARK CG-GT			1
008	919-38515-20	CAUTION MARK 9900RPM			1
		===== END OF DATA =====			

B53-01

CG-GT GEAR CASE



REF. NUMBER	PARTS NUMBER	DESCRIPTION	Q'TY	SERIAL NUMBER
001	300-37821-91	GEAR CASE ASSY 24	1	
002	994-61050-254	HEX. HOLE BOLT 5X25/S	2	
004	993-51022-002	STOP RING C-22, INNER	1	
005	993-57010-002	STOP RING OUTER 10	1	
006	999-61690-002	BALL BEARING	1	
007	999-61690-000	BALL BEARING 6900, 22MM	1	
009	300-38150-21	GEAR CASE 24	1	
011	994-61050-124	HEX. HOLE BOLT 5X12S	1	
012	316-38150-20	OILING BOLT	1	
013	999-61609-000	BALL BEARING 609	1	
015	304-3338R-20	GEAR SHAFT	1	
016	999-61620-103	BALL BEARING 6201D, 32M	1	
017	993-51032-002	STOP RING C-32, INNER	1	
018	310-38150-20	CUTTER HOLDER	1	
019	311-38150-20	CUTTER HOLDER CAP	1	
022	313-38150-20	FIXING NUT M10X1.25	1	
023	324-38150-20	GEAR CASE WASHER	1	
026	994-81060-254	HEX. HOLE BUTTON SCREW	2	
028	442-37417-20	SAFETY GUARD BRACKET	1	
029	441-38150-20	SAFETY COVER, 24 DIA.	1	
030	445-38150-20	SAFETY GUARD HOLDER	1	
032	797-38150-20	KNIFE	1	
034	993-17052-002	TAPPING SCREW 5X20	1	
035	301-38150-00	GEAR PINION SET SPARE	1	
038	994-61050-124	HEX. HOLE BOLT 5X12S	2	

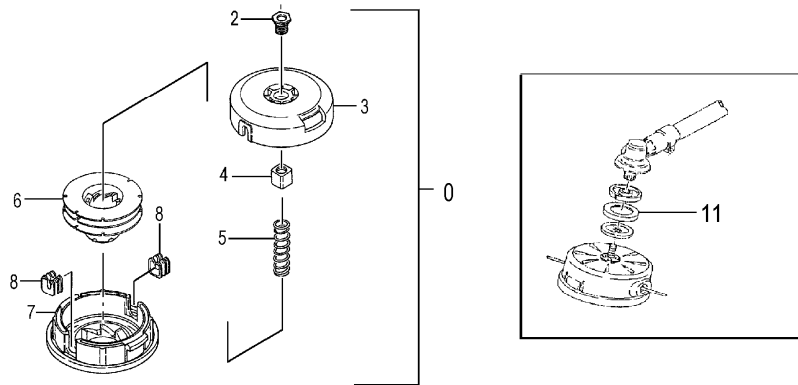
B53-02**CG-GT OPERATION PIPE**

REF. NUMBER	PARTS NUMBER	DESCRIPTION	Q'TY	SERIAL NUMBER
033	341-38466-80	DRIVE SHAFT PIPE 742L	1	
034	347-38360-90	BUSH ASS'Y	3	
035	036-38190-20	DRIVE SHAFT B 783L	1	
036	347-38466-20	BUSH	1	

B53-03**CG-GT TOOLS**

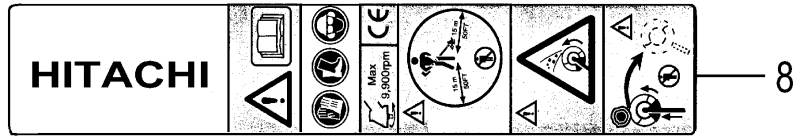
REF. NUMBER	PARTS NUMBER	DESCRIPTION	Q'TY	SERIAL NUMBER
000	783-33832-90	NYLON HEAD/SURE TAP, M	1	
002	356-3383B-20	MOUNTING NUT L-M10X1.2	1	
003	786-33830-20	CUTTING BODY	1	
004	315-33830-20	SPECIAL NUT	1	
005	793-33830-20	REEL SPRING	1	
006	787-33830-20	SPOOL	1	
007	789-33830-20	CUTTING BODY CAP	1	
008	788-33830-20	EYELET	2	
011	307-37307-20	WINDING PROTECTOR	1	

#



B53-04

CG-GT LABAELS



REF. NUMBER	PARTS NUMBER	DESCRIPTION	Q'TY	SERIAL NUMBER
002	929-38232-21	SYMBOL MARK CG-GT	1	
008	919-38515-20	CAUTION MARK 9900RPM	1	