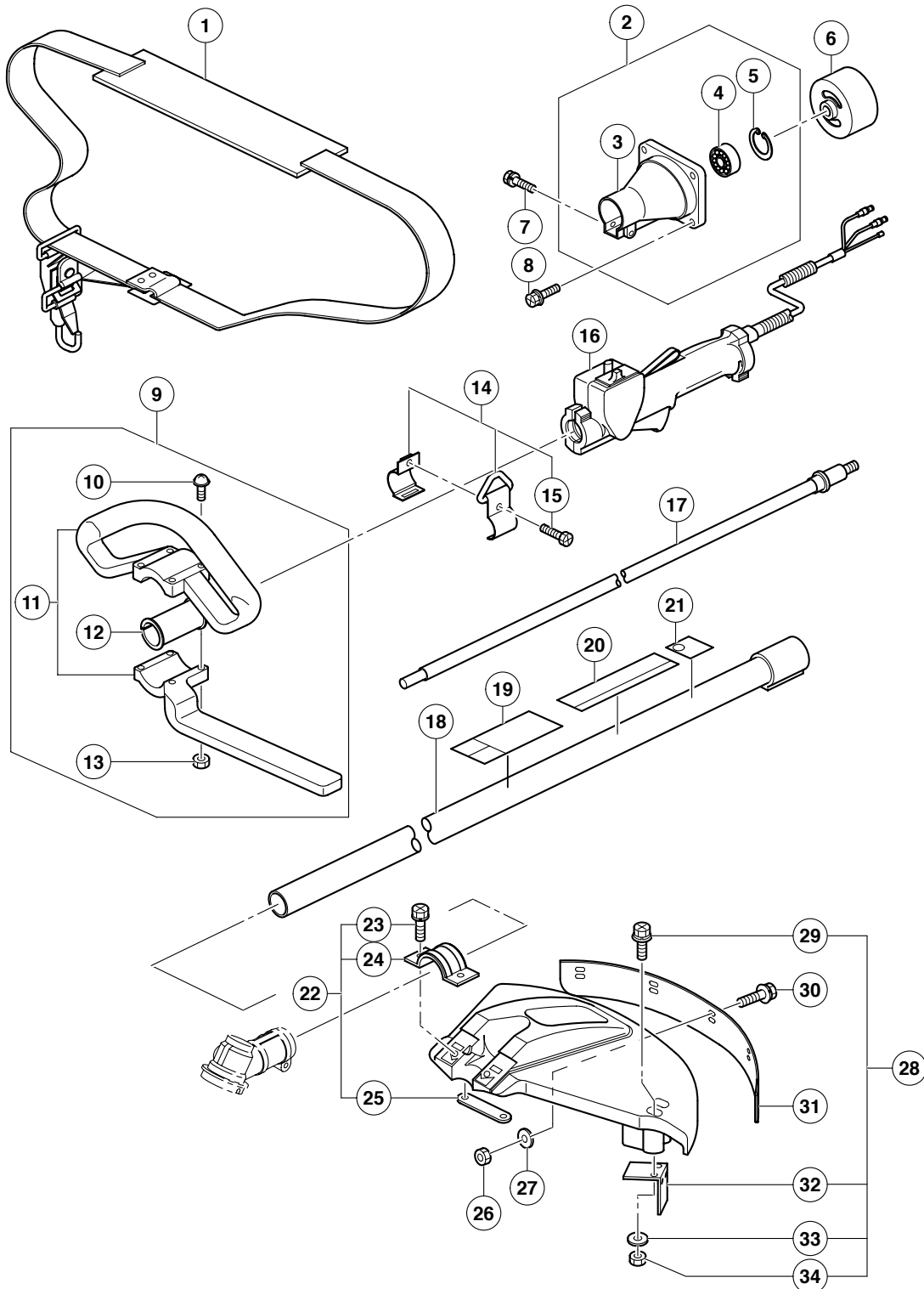


## ENGINE TOOL PARTS LIST

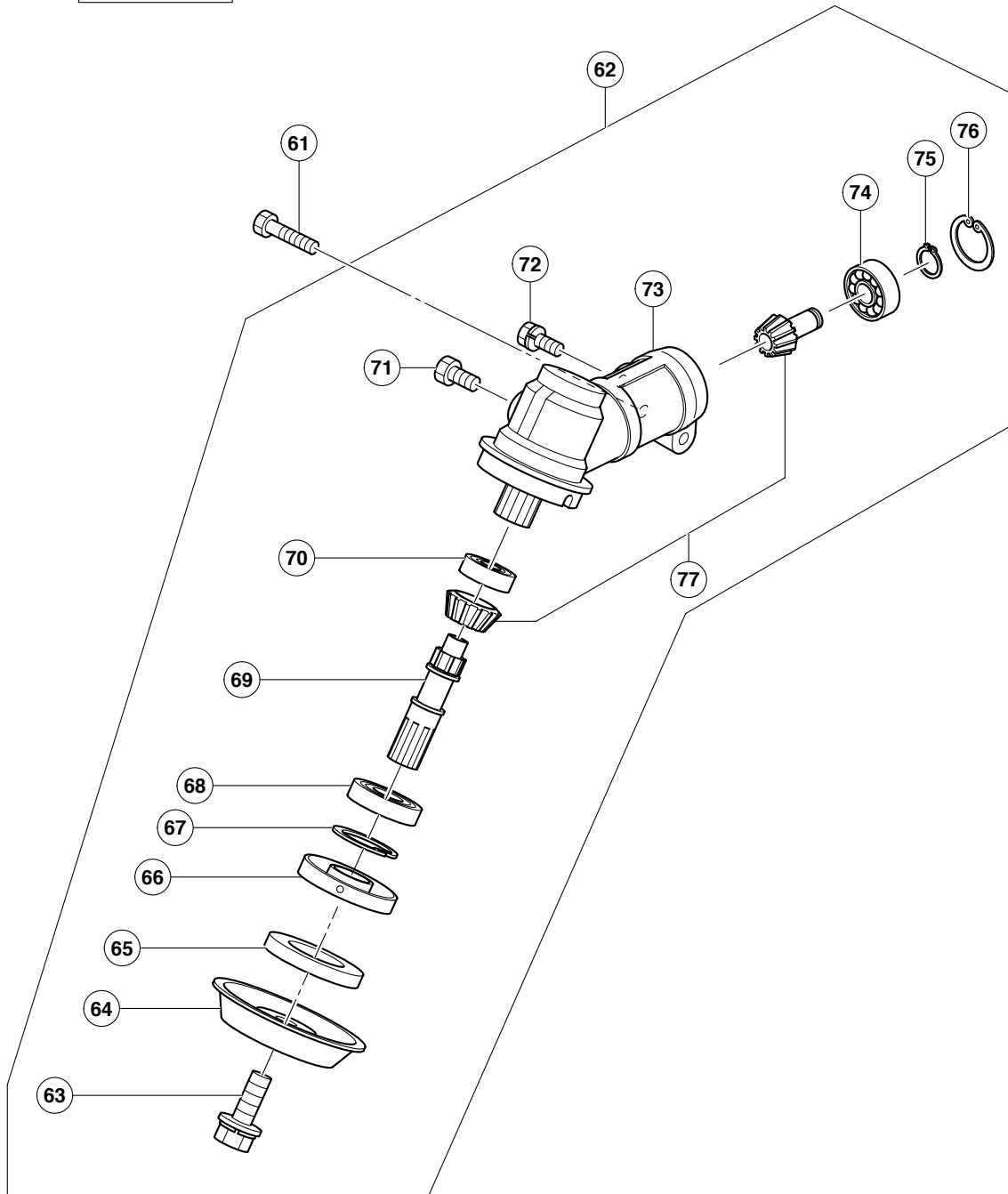
■ BRUSH CUTTER  
Model CG 23EA

2005 · 2 · 25  
(E1)

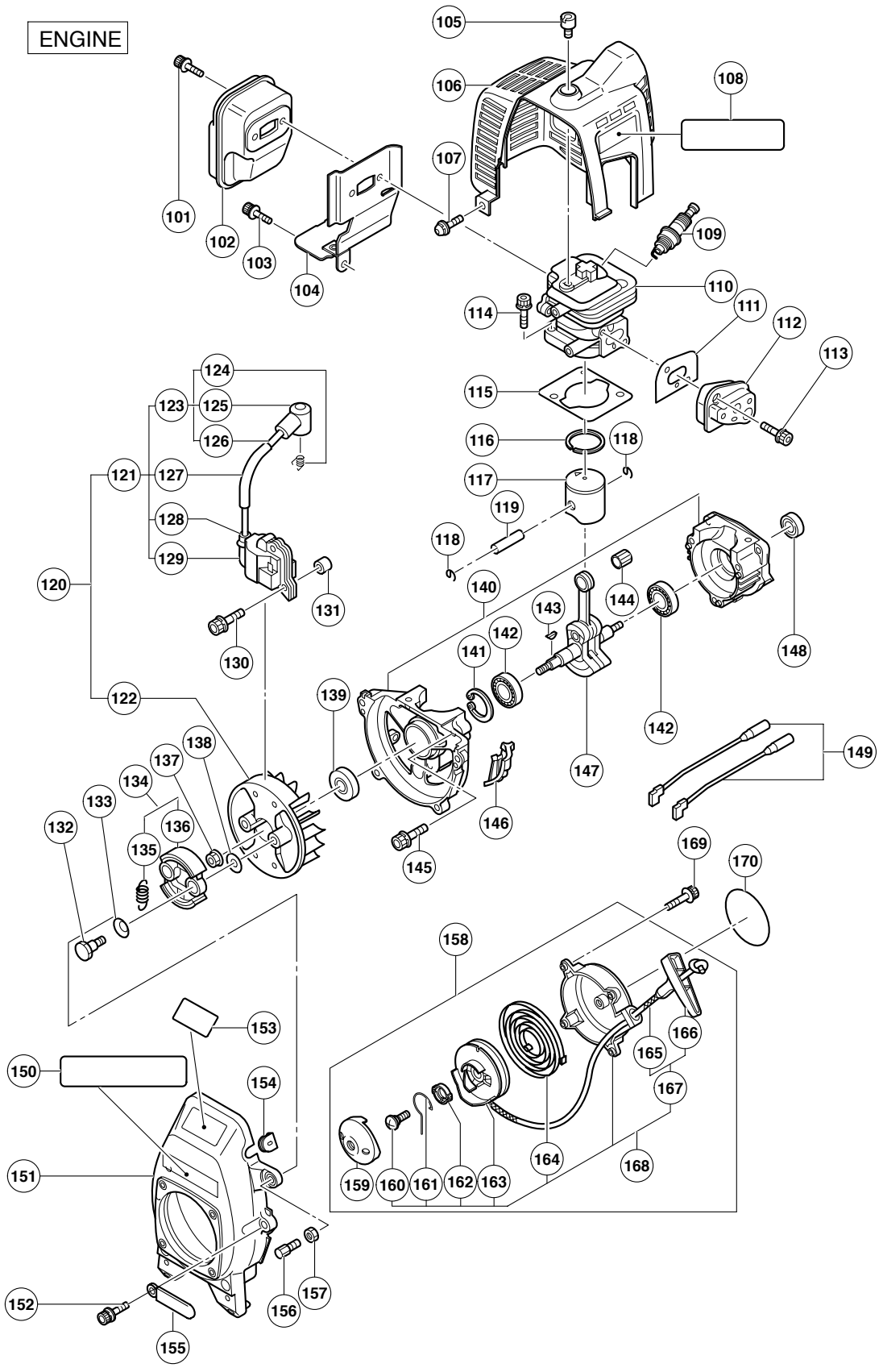
MAIN BODY

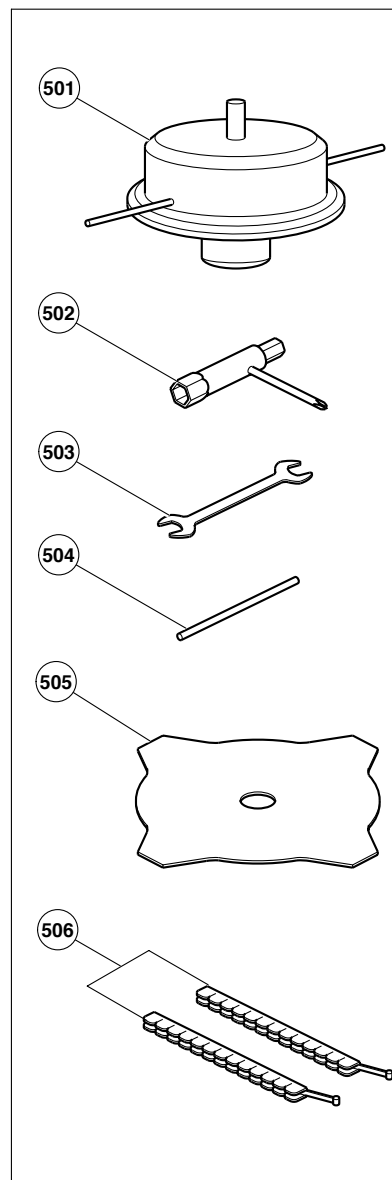
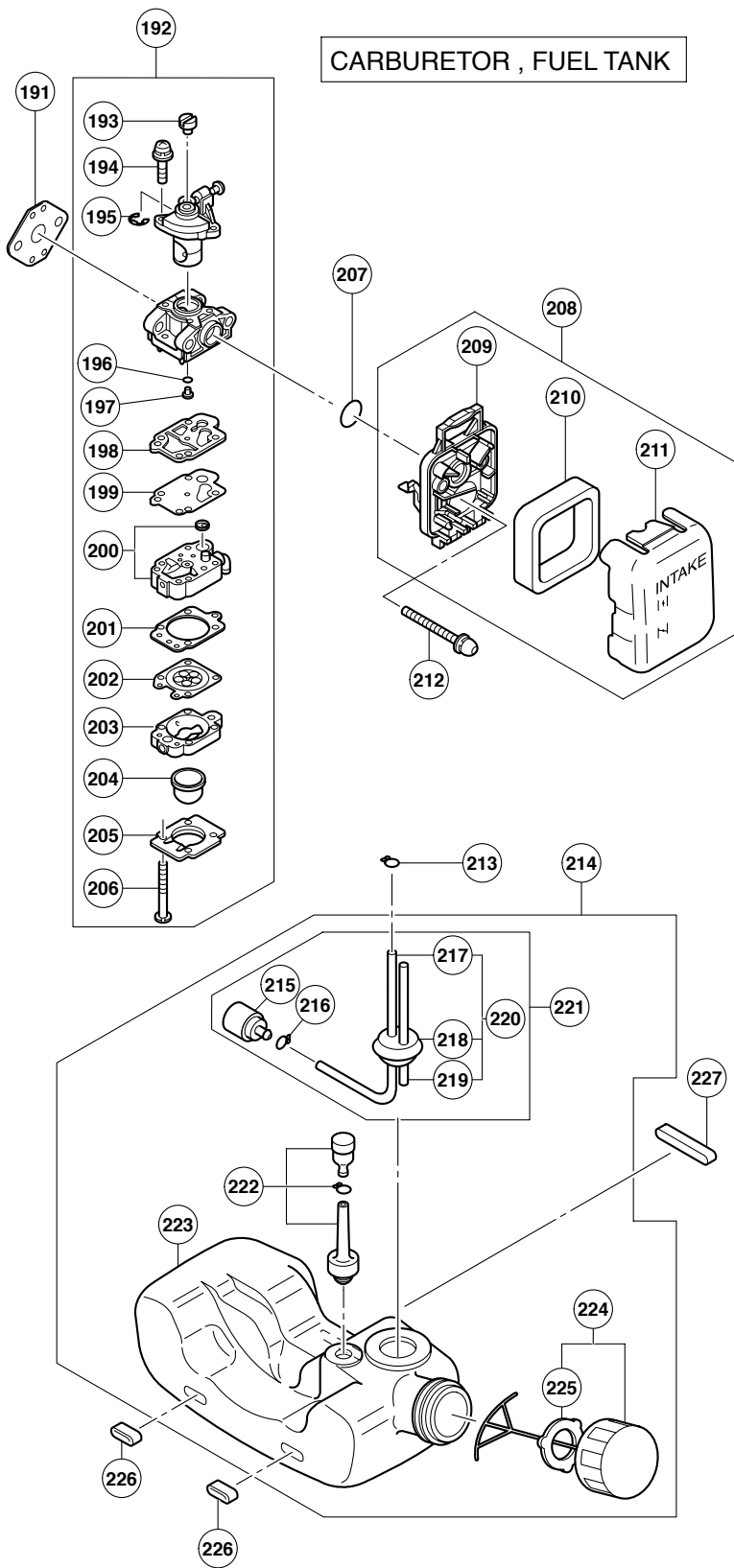


GEAR CASE



ENGINE





**PARTS**

CG 23EA

ITEM NO.	CODE NO.	DESCRIPTION	NO. USED	REMARKS
		MAIN BODY		
1	683-002	HANGING STRAP	1	
2	682-976	CLUTCH CASE ASS'Y	1	INCLUD. 3-5
3	682-977	CLUTCH CASE	1	
4	682-978	BEARING 6200ZZ	1	
5	682-979	SNAP RING H30	1	
6	682-981	CLUTCH DRUM	1	
7	682-980	BOLT (W/WASHERS) M5X30	1	
8	683-001	BOLT (W/WASHERS) M5X20	4	
9	682-987	LOOP HANDLE ASS'Y	1	INCLUD. 10-13
10	682-990	SCREW (W/SP. WASHER) M5X28	4	
11	682-988	LOOP HANDLE	1	
12	682-989	PACKING (A)	1	
13	949-555	NUT M5 (10 PCS.)	4	
14	682-985	HANGING BRACKET ASS'Y	1	INCLUD. 15
15	682-986	BOLT M5X15	1	
16	682-984	THROTTLE TRIGGER	1	
17	682-982	DRIVE SHAFT	1	
18	682-983	DRIVE SHAFT TUBE	1	
19		CAUTION LABEL (A)	1	
20		HITACHI LABEL	1	
21		NOISE LABEL (A)	1	
22	682-991	SAFETY GUARD ASS'Y	1	INCLUD. 23-25
23	682-994	BOLT (W/SP. WASHER) M6X30	2	
24	682-992	BRACKET	1	
25	682-993	THREADED BRACKET	1	
26	949-555	NUT M5 (10 PCS.)	5	
27	683-000	PLANE WASHER	5	
28	682-995	STRING CUTTER ASS'Y	1	INCLUD. 29, 32-34
29	682-997	BOLT (W/WASHER) M5X25	2	
30	682-999	BOLT (W/WASHERS) M5X15	5	
31	682-998	EXTENSION	1	
32	682-996	STRING CUTTER	1	
33	949-454	SPRING WASHER M5 (10 PCS.)	2	
34	949-555	NUT M5 (10 PCS.)	2	
		GEAR CASE		
61	683-019	BOLT M5X12	1	
62	683-003	GEAR CASE ASS'Y	1	INCLUD. 63-77
63	683-018	BOLT (LEFT HAND) W/WASHERS M8X22	1	
64	683-017	STABILIZER	1	
65	683-016	CLAMPING WASHER	1	
66	683-015	BOSS ADAPTER	1	
67	683-010	SNAP RING H28	1	
68	683-009	BEARING 60012RK	1	
69	683-008	BLADE SHAFT	1	
70	683-006	BEARING 626	1	
71	683-005	BOLT M6X8	1	
72	683-014	BOLT (W/SP. WASHER) M5X25	1	
73	683-004	GEAR CASE	1	
74	683-011	BEARING 609Z	1	
75	683-012	SNAP RING H9	1	

**PARTS**

CG 23EA

ITEM NO.	CODE NO.	DESCRIPTION	NO. USED	REMARKS
76	683-013	SNAP RING H24	1	
77	683-007	GEAR SET	1	
		ENGINE		
101	683-031	SCREW M5X50	2	
102	683-030	MUFFLER COMP.	1	
103	683-033	CAP SCREW M5X16	1	
104	683-032	GASKET COMP.	1	
105	683-035	KNOB	1	
106	683-034	TOP COVER	1	
107	683-085	SCREW M5X16	1	
108	683-351	CE LABEL	1	
109	683-068	SPARK PLUG (R)	1	
110	683-024	CYLINDER	1	
111	683-028	GASKET (B)	1	
112	683-027	INSULATOR	1	
113	683-029	SCREW M5X25	2	
114	683-026	SCREW M5X20	2	
115	683-025	GASKET (A)	1	
116	683-042	PISTON RING	1	
117	683-041	PISTON	1	
118	683-045	CLIP (PISTON PIN)	2	
119	683-043	PISTON PIN	1	
120	683-054	MAGNETO ASS'Y	1	INCLUD. 121, 122
121	683-056	IGNITION COIL ASS'Y	1	INCLUD. 123, 127-129
122	683-055	ROTOR-FAN	1	
123	683-058	CORD ASS'Y	1	INCLUD. 124-126
124	683-061	CONNECTOR	1	
125	683-060	PLUG CAP	1	
126	683-059	CORD	1	
127	683-063	TUBE	1	
128	683-062	CAP	1	
129	683-057	COIL	1	
130	683-067	CAP SCREW M4X25	2	
131	683-066	SPACER	2	
132	683-050	SPECIAL BOLT M6	2	
133	683-052	WAVE WASHER	2	
134	683-047	CLUTCH ASS'Y	1	INCLUD. 135, 136
135	683-049	SPRING CLUTCH	1	
136	683-048	CLUTCH SHOE	2	
137	683-065	NUT M8	1	
138	683-051	WASHER	2	
139	683-038	OIL SEAL (A)	1	
140	683-036	CRANK CASE	1	
141	683-010	SNAP RING H28	1	
142	683-037	BEARING 6001C3	2	
143	683-064	WOODRUFF KEY	1	
144	683-044	NEEDLE BEARING	1	
145	683-040	CAP SCREW M5X30	3	
146	683-086	SCREEN	1	
147	683-046	CRANK SHAFT AND CONN. ROD SET	1	
148	683-039	OIL SEAL (B)	1	

**PARTS**

CG 23EA

ITEM NO.	CODE NO.	DESCRIPTION	NO. USED	REMARKS
149	683-069	LEAD	2	
150		CAUTION LABEL (B)	1	
151	683-053	FAN COVER	1	
152	683-087	CAP SCREW M5X20	4	
153		EMISSION LABEL (A)	1	
154	683-070	GROMMET	1	
155	683-088	CLAMP	1	
156	683-084	SCREW	1	
157	683-083	NUT M6	1	
158	683-071	RECOIL STARTER ASS'Y	1	INCLUD. 159, 168
159	683-081	STARTER PULLEY	1	
160	683-080	SPECIAL SCREW	1	
161	683-079	SWING ARM	1	
162	683-078	COLLAR	1	
163	683-077	PULLEY	1	
164	683-076	SPIRAL SPRING	1	
165	683-075	STARTER ROPE	1	
166	683-074	STARTER GRIP	1	
167	683-073	ROPE ASS'Y	1	INCLUD. 165, 166
168	683-072	RECOIL ASS'Y	1	INCLUD. 160-164, 167
169	683-082	BOLT M4X16	3	
170		NAME PLATE	1	
		CARBURETOR, FUEL TANK		
191	683-104	GASKET (E)	1	
192	683-089	CARBURETOR ASS'Y	1	INCLUD. 193-206
193	683-102	SWIVEL	1	
194	683-103	SCREW M3X10	2	
195	683-101	RING	1	
196	683-090	O-RING (I.D. 1.8)	1	
197	683-091	MAIN JET	1	
198	683-092	GASKET (C)	1	
199	683-093	DIAPHRAGM	1	
200	683-094	PUMP BODY	1	
201	683-095	GASKET (D)	1	
202	683-096	DIAPHRAGM	1	
203	683-097	PURGE BODY	1	
204	683-098	PRIMER PUMP	1	
205	683-099	PUMP COVER	1	
206	683-100	SCREW M3X24	4	
207	683-105	O-RING (I.D. 14.8)	1	
208	683-106	AIR FILTER ASS'Y	1	INCLUD. 209-211
209	683-107	CASE	1	
210	683-108	FILTER	1	
211	683-109	CLEANER COVER	1	
212	683-110	CAP SCREW M5X60	2	
213	683-122	CLIP	1	
214	683-111	FUEL TANK ASS'Y	1	INCLUD. 221-224
215	683-121	FUEL FILTER	1	
216	683-122	CLIP	1	
217	683-119	FUEL PIPE 3X5X140	1	
218	683-118	GROMMET	1	

**PARTS**

CG 23EA

ITEM NO.	CODE NO.	DESCRIPTION	NO. USED	REMARKS
219	683-120	RETURN PIPE 3X6X85	1	
220	683-117	PIPE ASS'Y	1	INCLUD. 217-219
221	683-116	FUEL PIPE ASS'Y	1	INCLUD. 215, 216, 220
222	683-115	BREATHER	1	
223	683-112	FUEL TANK	1	
224	683-113	FUEL TANK CAP ASS'Y	1	INCLUD. 225
225	683-114	PACKING (B)	1	
226	683-123	PAD (A)	2	
227	683-124	PAD (B)	1	

**STANDARD ACCESSORIES**

ITEM NO.	CODE NO.	DESCRIPTION	NO. USED	REMARKS
501	683-020	SEMI-AUTOMATIC HEAD 4"	1	
502	683-021	BOX SPANNER	1	
503	683-022	DOUBLE-ENDED WRENCH	1	
504	683-023	LEVER HANDLE	1	
505	683-350	CUTTER BLADE 230MM-D25.4 HOLE-NT4	1	
506	683-155	BLADE COVER	1	

**OPTIONAL ACCESSORIES**

ITEM NO.	CODE NO.	DESCRIPTION	NO. USED	REMARKS
601	682-975	GREASE (100G)	1	