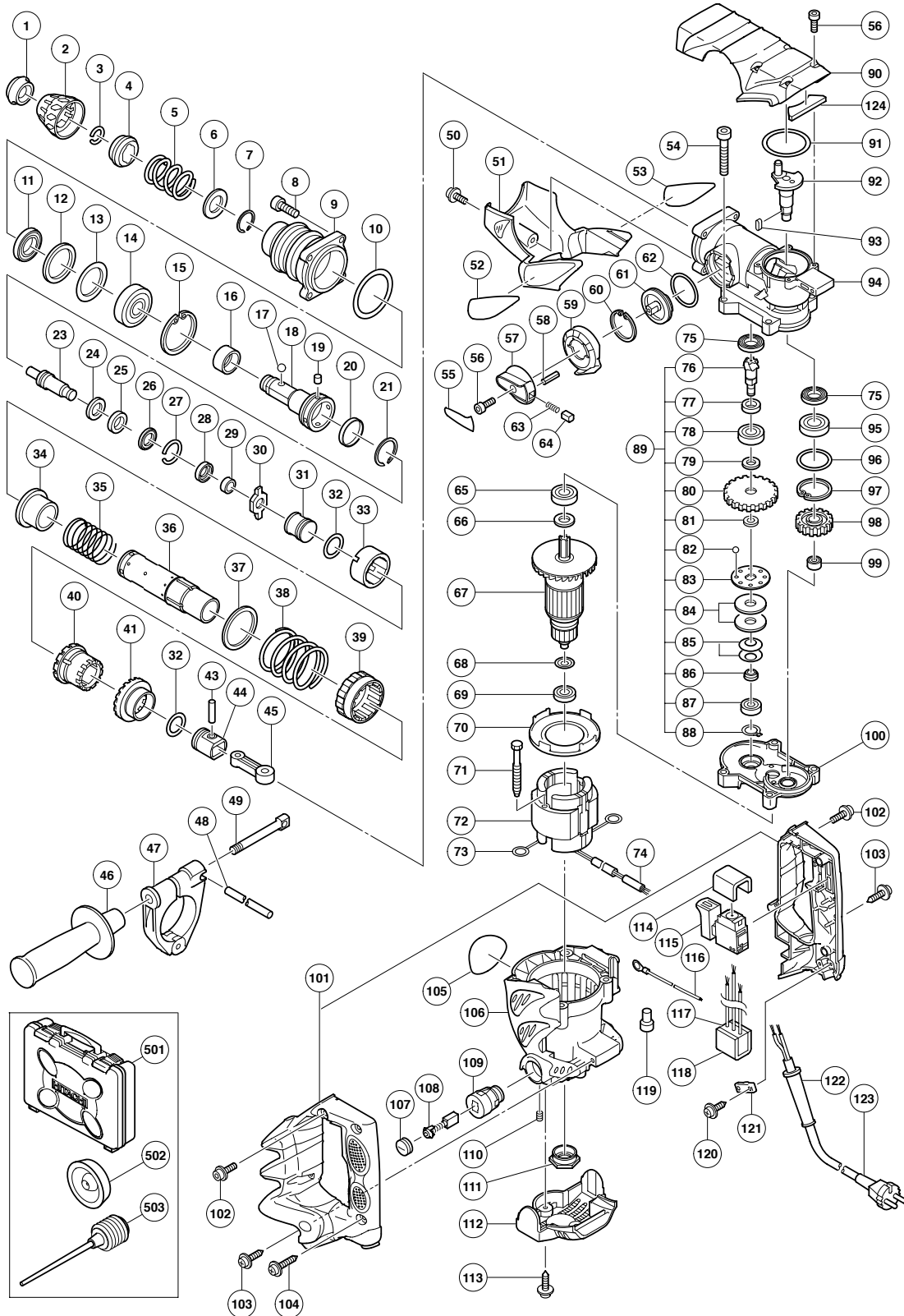


## ELECTRIC TOOL PARTS LIST

### ■ ROTARY HAMMER Model DH 30PC2

2006 · 8 · 3

(E1)



**PARTS**

DH 30PC2

ITEM NO.	CODE NO.	DESCRIPTION	NO. USED	REMARKS
1	323-078	FRONT CAP	1	
2	323-077	GRIP	1	
3	306-340	STOPPER RING	1	
4	323-076	BALL HOLDER	1	
5	323-075	RETAINER SPRING	1	
6	325-668	WASHER (D)	1	
7	306-993	RETAINING RING	1	
8	321-313	SEAL LOCK HEX. SOCKET HD. BOLT M6X22	4	
9	325-651	CYLINDER CASE	1	
10	980-744	O-RING (S-55)	1	
11	320-324	OIL SEAL	1	
12	320-325	DAMPER (B)	1	
13	320-326	DAMPER WASHER (B)	1	
14	326-304	BALL BEARING 6005DDCMPS2L	1	
15	948-227	RETAINING RING FOR D47 HOLE	1	
16	325-667	SLEEVE	1	
17	959-156	STEEL BALL D7.0 (10 PCS.)	2	
18	325-652	RETAINER SLEEVE	1	
19	325-658	NEEDLE PIN	4	
20	326-301	SLEEVE (C)	1	
21	313-420	RETAINING RING D38	1	
23	325-653	SECOND HAMMER	1	
24	323-059	DAMPER WASHER	1	
25	323-060	DAMPER	1	
26	323-061	DAMPER HOLDER	1	
27	323-062	STOPPER RING	1	
28	326-302	DAMPER HOLDER (B)	1	
29	326-303	DAMPER (C)	1	
30	326-300	SLIDE RING	1	
31	325-660	STRIKER	1	
32	319-577	O-RING (I.D 19.2)	2	
33	325-656	SLIDE SLEEVE (B)	1	
34	325-655	SLIDE SLEEVE (A)	1	
35	325-664	CLUTCH SPRING	1	
36	325-654	CYLINDER	1	
37	325-661	WASHER (C)	1	
38	325-662	LOCK SPRING	1	
39	325-663	LOCK SLEEVE	1	
40	325-665	CLUTCH	1	
41	325-666	BEVEL GEAR	1	
43	319-581	PISTON PIN	1	
44	319-580	PISTON	1	
45	319-585	CONNECTING ROD	1	
46	313-078	SIDE HANDLE	1	
47	325-672	HANDLE HOLDER	1	
48	320-973	STOPPER ROD	1	
49	313-080	HANDLE BOLT	1	
50	998-471	HEX. SOCKET HD. BOLT (W/FLANGE) M5X12	1	
51	325-677	HOOD	1	
52		HITACHI LABEL	1	
53		HITACHI LABEL	1	

**PARTS**

DH 30PC2

ITEM NO.	CODE NO.	DESCRIPTION	NO. USED	REMARKS	
54	986-940	SEAL LOCK HEX. SOCKET HD. BOLT M6X45	4		
55	321-867	LEVER LABEL	1		
56	983-162	SEAL LOCK HEX. SOCKET HD. BOLT M4X12	5		
57	321-309	CHANGE LEVER	1		
58	321-312	PIN D2X10	1		
59	325-671	LEVER HOLDER	1		
60	948-391	RETAINING RING FOR D40 HOLE	1		
61	325-670	LEVER SHAFT	1		
62	980-948	O-RING	1		
63	321-310	LEVER SPRING	1		
64	321-311	PUSHING BUTTON	1		
65	600-1DD	BALL BEARING 6001DDCMPS2L	1		
66	971-736	WASHER (B)	1		
*	67	360-768C	ARMATURE 110V	1	
*	67	360-768U	ARMATURE ASS'Y 120V	1	INCLUD. 65, 66, 68, 69
*	67	360-768E	ARMATURE 220V-230V	1	
*	67	360-768F	ARMATURE 240V	1	
68	982-631	WASHER (A)	1		
69	608-VVM	BALL BEARING 608VVC2PS2L	1		
70	323-083	FAN GUIDE	1		
71	953-121	HEX. HD. TAPPING SCREW D5X50	2		
*	72	340-672C	STATOR ASS'Y 110V	1	INCLUD. 73
*	72	340-672K	STATOR ASS'Y 110V	1	INCLUD. 73 FOR VEN
*	72	340-672G	STATOR ASS'Y 120V	1	INCLUD. 73
*	72	340-672E	STATOR ASS'Y 220V-230V	1	INCLUD. 73
*	72	340-672H	STATOR ASS'Y 220V-230V	1	INCLUD. 73 FOR INA, SYR, SIN, HKG, IND
*	72	340-672J	STATOR ASS'Y 240V	1	INCLUD. 73
*	72	340-672F	STATOR ASS'Y 240V	1	INCLUD. 73 FOR AUS
73	930-703	BRUSH TERMINAL	2		
74	321-322	VINYL TUBE	1		
75	981-851	OIL SEAL (B)	2		
76	325-647	BEVEL PINION	1		
77	325-648	COLLAR	1		
78	600-1DD	BALL BEARING 6001DDCMPS2L	1		
79	992-503	WASHER	1		
80	325-649	SECOND GEAR	1		
81	971-087	STOPPER WASHER	1		
82	959-155	STEEL BALL D3.97 (10 PCS.)	8		
83	992-916	CLUTCH PLATE	1		
84	992-926	SPRING PLATE	2		
85	980-877	BELLEVILLE SPRING	2		
86	325-650	BUSHING	1		
87	608-VVM	BALL BEARING 608VVC2PS2L	1		
88	940-079	RETAINING RING FOR D8 SHAFT	1		
89	325-646	SLIP CLUTCH ASS'Y	1	INCLUD. 76-88	
90	325-669	CRANK CASE COVER	1		
91	980-715	O-RING (S-48)	1		
92	325-644	CRANK SHAFT	1		
93	944-109	FEATHER KEY 3X3X8	1		
94	325-643	CRANK CASE	1		
95	600-2DD	BALL BEARING 6002DDCMPS2L	1		

**PARTS**

DH 30PC2

ITEM NO.	CODE NO.	DESCRIPTION	NO. USED	REMARKS
96	872-767	O-RING (S-32)	1	
97	948-001	RETAINING RING FOR D32 HOLE	1	
98	325-645	FIRST GEAR	1	
99	939-299	NEEDLE BEARING (M661)	1	
100	325-674	GEAR COVER	1	
101	325-680	HANDLE (A).(B) SET	1	
102	994-192	HEX. SOCKET HD. BOLT (W/FLANGE) M5X16	2	
103	302-089	TAPPING SCREW (W/FLANGE) D5X20 (BLACK)	2	
104	307-028	TAPPING SCREW (W/FLANGE) D4X25 (BLACK)	3	
105		NAME PLATE	1	
106	325-673	HOUSING ASS'Y	1	INCLUD. 109, 110
107	945-161	BRUSH CAP	2	
108	999-073	CARBON BRUSH (AUTO STOP TYPE) (1 PAIR)	2	
109	958-900	BRUSH HOLDER	2	
110	938-477	HEX. SOCKET SET SCREW M5X8	2	
111	310-111	BEARING BUSHING (B)	1	
112	323-085	TAIL COVER	1	
113	307-811	TAPPING SCREW (W/FLANGE) D4X16 (BLACK)	2	
114	317-492	SUPPORT (B)	1	
115	325-675	SWITCH (2P PILLAR TYPE)	1	
* 116	994-190	INTERNAL WIRE	1	FOR NZL, AUS, GBR, SAF, EUROPE, FIN, NOR, SWE, DEN, AUT, SUI, CHN, TPE
* 117	994-273	NOISE SUPPRESSOR	1	FOR NZL, AUS, GBR, SAF, EUROPE, FIN, NOR, SWE, DEN, AUT, SUI, CHN, TPE
* 118	317-492	SUPPORT (B)	1	FOR NOISE SUPPRESSOR
* 119	959-140	CONNECTOR 50091 (10 PCS.)	1	FOR NOISE SUPPRESSOR
120	984-750	TAPPING SCREW (W/FLANGE) D4X16	2	
121	960-266	CORD CLIP	1	
* 122	953-327	CORD ARMOR D8.8	1	
* 122	938-051	CORD ARMOR D10.1	1	
* 123	500-390Z	CORD	1	(CORD ARMOR D8.8)
* 123	500-249Z	CORD	1	(CORD ARMOR D8.8) FOR USA, CAN
* 123	500-439Z	CORD	1	(CORD ARMOR D8.8) FOR NZL, AUS
* 123	500-424Z	CORD	1	(CORD ARMOR D8.8) FOR SIN, KUW
* 123	500-235Z	CORD	1	(CORD ARMOR D8.8) FOR INA, IND
* 123	500-447Z	CORD	1	(CORD ARMOR D8.8) FOR SYR
* 123	500-239Z	CORD	1	(CORD ARMOR D10.1) FOR VEN
* 123	500-391Z	CORD	1	(CORD ARMOR D8.8) FOR SUI
* 123	500-454Z	CORD	1	(CORD ARMOR D8.8) FOR GBR (110V)
* 123	500-446Z	CORD	1	(CORD ARMOR D8.8) FOR GBR (230V)
* 123	500-457Z	CORD	1	(CORD ARMOR D8.8) FOR CHN
* 123	500-440Z	CORD	1	(CORD ARMOR D8.8) FOR HKG
* 123	500-477Z	CORD	1	(CORD ARMOR D10.1) FOR TPE
124	326-651	FELT PACKING	1	

## STANDARD ACCESSORIES

DH 30PC2

ITEM NO.	CODE NO.	DESCRIPTION	NO. USED	REMARKS
501	325-679	CASE	1	
502	971-787	DUST CUP	1	
503	318-085	SYRINGE (BELLOWS TYPE)	1	

## OPTIONAL ACCESSORIES

ITEM NO.	CODE NO.	DESCRIPTION	NO. USED	REMARKS
601	303-046	BULL POINT (SDS+) 250MM (ROUND SHANK TYPE)	1	
602	303-044	CHEMICAL ANCHOR ADAPTER (SDS+) 12.7MMX90L	1	
603	303-045	CHEMICAL ANCHOR ADAPTER (SDS+) 19.0MMX100L	1	
604	303-334	CHUCK HANDLE	1	
605	302-976	ANCHOR SETTING ADAPTER A (SDS+) W1/4X260L	1	
606	930-515	CHUCK WRENCH 10G	1	
607	302-975	ANCHOR SETTING ADAPTER A (SDS+) W5/16X260L	1	
608	303-621	ANCHOR SETTING ADAPTER A (SDS+) W3/8X160L	1	
609	302-974	ANCHOR SETTING ADAPTER A (SDS+) W3/8X260L	1	
610	302-979	ANCHOR SETTING ADAPTER B (SDS+) W1/4X260L	1	
611	302-978	ANCHOR SETTING ADAPTER B (SDS+) W5/16X260L	1	
612	303-622	ANCHOR SETTING ADAPTER B (SDS+) W3/8X160L	1	
613	302-977	ANCHOR SETTING ADAPTER B (SDS+) W3/8X260L	1	
614	303-617	TAPER SHANK ADAPTER (SDS PLUS) NO. 1	1	
615	303-618	TAPER SHANK ADAPTER (SDS PLUS) NO. 2	1	
616	303-619	A-TAPER SHANK ADAPTER (SDS PLUS)	1	
617	303-620	B-TAPER SHANK ADAPTER (SDS PLUS)	1	
618	981-122	SPECIAL SCREW M6X22	1	
619	303-627	CORE BIT SHANK (SDS PLUS) 45-90MM 300L	1	
620	303-625	CORE BIT SHANK (SDS PLUS) 25-38MM 105L	1	
621	303-626	CORE BIT SHANK (SDS PLUS) 25-38MM 300L	1	
622	303-624	CHUCK ADAPTER (D) (SDS PLUS)	1	
623	321-825	DRILL CHUCK AND ADAPTER SET	1	INCLUD. 624, 625
624	303-623	CHUCK ADAPTER (G) (SDS PLUS)	1	
625	321-814	DRILL CHUCK 13VLRB-D	1	INCLUD. 626
626	995-344	FLAT HD. SCREW (A) (LEFT HAND) M6X25	1	
627	321-813	DRILL CHUCK 13VLD-D	1	
628	980-927	GREASE FOR HAMMER. HAMMER DRILL (500G)	1	
629	981-840	GREASE (A) FOR HAMMER. HAMMER DRILL (30G)	1	
630	308-471	GREASE FOR HAMMER. HAMMER DRILL (70G)	1	
631	971-511Z	+ DRIVER BIT (A) NO. 2 25L	1	
632	971-512Z	+ DRIVER BIT (A) NO. 3 25L	1	
633	944-477	COTTER	1	
634	982-684	CENTER PIN (A) 109L FOR CORE BIT D32-38	1	
635	982-685	CENTER PIN (B) 104L FOR CORE BIT D45-90	1	
636	315-921	ADAPTER (A) FOR HAMMER DRILL	1	
637	982-672	CORE BIT (A) 25MM	1	
638	982-673	CORE BIT (A) 29MM	1	
639	982-674	CORE BIT (A) 32MM	1	INCLUD. 640
640	982-686	GUIDE PLATE (FOR CORE BIT 32MM)	1	
641	982-675	CORE BIT (A) 35MM	1	INCLUD. 642

**OPTIONAL ACCESSORIES**

DH 30PC2

ITEM NO.	CODE NO.	DESCRIPTION	NO. USED	REMARKS
642	982-687	GUIDE PLATE (FOR CORE BIT 35MM)	1	
643	982-676	CORE BIT (A) 38MM	1	INCLUD. 644
644	982-688	GUIDE PLATE (FOR CORE BIT 38MM)	1	
645	982-677	CORE BIT (B) 45MM	1	INCLUD. 646
646	982-689	GUIDE PLATE (FOR CORE BIT 45MM)	1	
647	982-678	CORE BIT (B) 50MM	1	INCLUD. 648
648	982-690	GUIDE PLATE (FOR CORE BIT 50MM)	1	
649	982-679	CORE BIT (B) 65MM	1	INCLUD. 650
650	982-691	GUIDE PLATE (FOR CORE BIT 65MM)	1	
651	982-680	CORE BIT (B) 80MM	1	INCLUD. 652
652	982-692	GUIDE PLATE (FOR CORE BIT 80MM)	1	
653	982-681	CORE BIT (B) 90MM	1	INCLUD. 654
654	982-693	GUIDE PLATE (FOR CORE BIT 90MM)	1	
655	971-794	ANCHOR SETTING ADAPTER A W1/4" (MANUAL)	1	
656	971-795	ANCHOR SETTING ADAPTER A W5/16" (MANUAL)	1	
657	971-796	ANCHOR SETTING ADAPTER A W3/8" (MANUAL)	1	
658	971-797	ANCHOR SETTING ADAPTER A W1/2" (MANUAL)	1	
659	971-798	ANCHOR SETTING ADAPTER A W5/8" (MANUAL)	1	
660	971-799	ANCHOR SETTING ADAPTER B W1/4" (MANUAL)	1	
661	971-800	ANCHOR SETTING ADAPTER B W5/16" (MANUAL)	1	
662	971-801	ANCHOR SETTING ADAPTER B W3/8" (MANUAL)	1	
663	971-802	ANCHOR SETTING ADAPTER B W1/2" (MANUAL)	1	
664	971-803	ANCHOR SETTING ADAPTER B W5/8" (MANUAL)	1	
665	944-460	TAPER SHANK DRILL BIT D11X100	1	
666	944-461	TAPER SHANK DRILL BIT D12.3X110	1	
667	993-038	TAPER SHANK DRILL BIT D12.7X110	1	
668	944-462	TAPER SHANK DRILL BIT D14.3X110	1	
669	944-500	TAPER SHANK DRILL BIT D14.5X110	1	
670	944-463	TAPER SHANK DRILL BIT D17.5X120	1	
671	944-464	TAPER SHANK DRILL BIT D21.5X140	1	
672	320-859	SYRINGE (BLOW-OUT BULB TYPE)	1	
673	303-571	DRILL BIT (SDS PLUS) D4.0X110	1	
674	303-575	DRILL BIT (SDS PLUS) D5.0X110	1	
675	303-578	DRILL BIT (SDS PLUS) D5.0X160	1	
676	303-576	DRILL BIT (SDS PLUS) D5.5X110	1	
677	303-581	DRILL BIT (SDS PLUS) D6.5X160	1	
678	303-582	DRILL BIT (SDS PLUS) D7.0X160	1	
679	303-584	DRILL BIT (SDS PLUS) D8.0X160	1	
680	303-585	DRILL BIT (SDS PLUS) D8.5X160	1	
681	303-586	DRILL BIT (SDS PLUS) D9.0X160	1	
682	303-591	DRILL BIT (SDS PLUS) D12.0X166	1	
683	303-606	DRILL BIT (SDS PLUS) D12.0X260	1	
684	303-593	DRILL BIT (SDS PLUS) D12.7X166	1	
685	303-595	DRILL BIT (SDS PLUS) D14.0X166	1	
686	303-598	DRILL BIT (SDS PLUS) D15.0X166	1	
687	303-599	DRILL BIT (SDS PLUS) D16.0X166	1	
688	303-611	DRILL BIT (SDS PLUS) D16.0X260	1	
689	303-601	DRILL BIT (SDS PLUS) D17.0X166	1	
690	303-613	DRILL BIT (SDS PLUS) D19.0X260	1	
691	303-614	DRILL BIT (SDS PLUS) D20.0X250	1	
692	303-615	DRILL BIT (SDS PLUS) D22.0X250	1	



