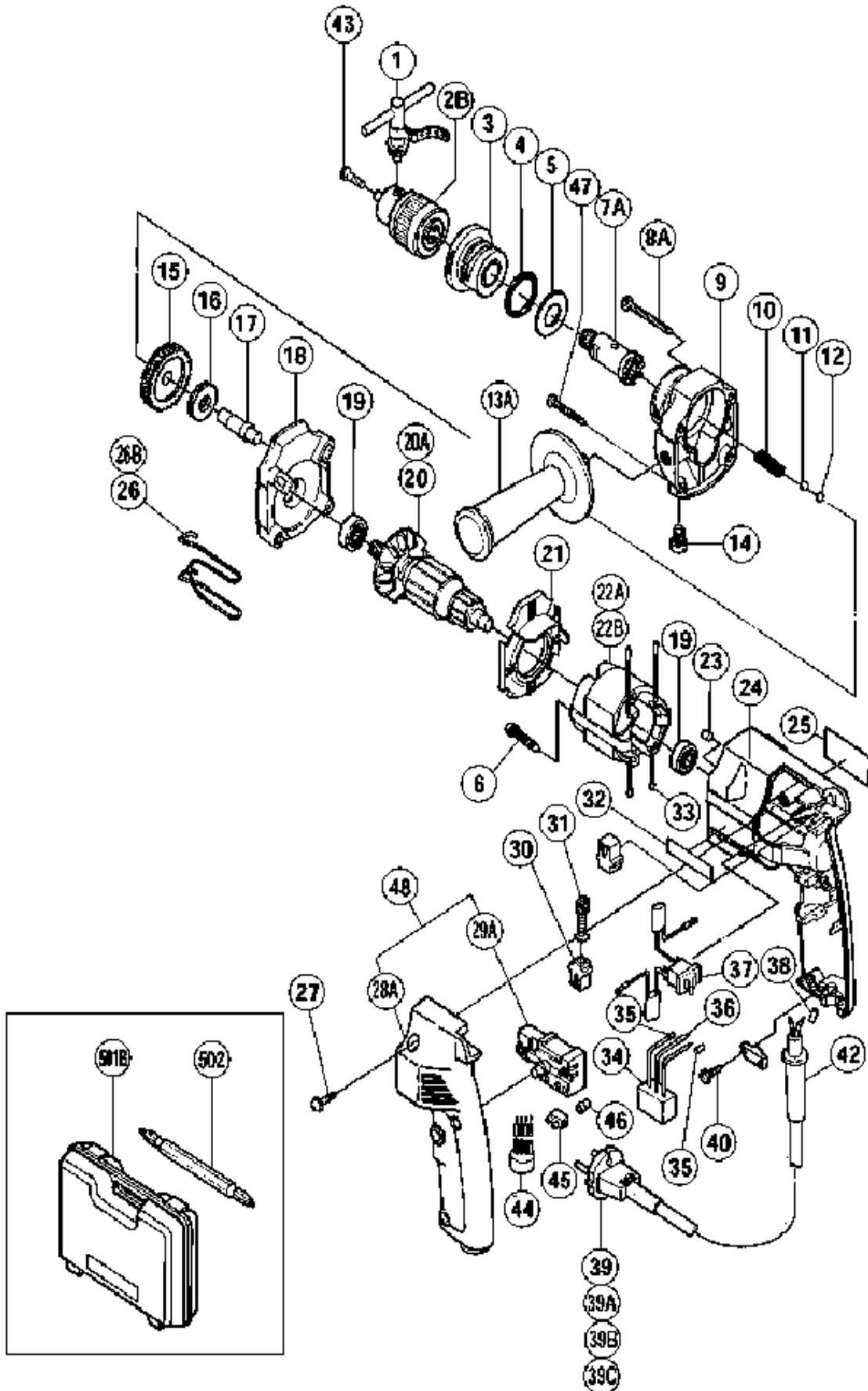


ELECTRIC TOOL PARTS LIST

■ SUPER DRILL
Model DW 15Y

2002-6-1
(E5-2)



PARTS

DW15Y

ITEM No.	CODE No.	DESCRIPTION	No. USED	REMARKS
1	930-119	CHUCK WRENCH 6.5G	1	
2B	950-256	DRILL CHUCK 10VLR	1	INCLUD.1,43
3	950-521	CLUTCH RING ASS'Y	1	INCLUD.4
4	873-731	O-RING (S-28)	1	
5	950-513	WASHER	2	
6	992-630	TAPPING SCREW (W/SP. WASHER) D4X40	2	
7A	950-512	SPINDLE	1	
8A	950-515	TAPPING SCREW D4X50	2	
9	950-516	GEAR COVER	1	
10	943-614	SPRING (A)	1	
11	959-154	STEEL BALL D5.556 (10 PCS.)	1	
12	950-539	PLATE	1	
13A	994-322	SIDE HANDLE	1	
14	950-519	STOP SCREW	1	
15	950-510	GEAR	1	
16	950-508	THRUST NEEDLE BEARING (NTN AS1101)	1	
17	950-509	GEAR SHAFT	1	
18	950-507	INNER COVER	1	
19	608-VVM	BALL BEARING 608VVC2PS2L	2	
* 20	992-640E	ARMATURE 220V-230V	1	
21	950-504	FAN GUIDE	1	
* 22A	992-639G	STATOR ASS'Y 220V-230V	1	INCLUD.33 FOR GBR
23	931-701	BEARING LOCK	1	
24	991-880	HOUSING	1	
25		NAME PLATE	1	
* 26	950-511	HOOK	1	
27	982-095	TAPPING SCREW (W/WASHER) D4X20	3	
28A	318-329	HANDLE COVER	1	
* 29A	316-257	SWITCH 220V-240V (2P PILLAR TYPE) W/LOCK	1	SINCE 8.1999
30	930-483	BRUSH HOLDER	2	
31	999-041	CARBON BRUSH (1 PAIR)	2	
32	950-565	HITACHI LABEL	1	
* 33	981-373	TUBE (D)	2	FOR STATOR
* 34	994-273	NOISE SUPPRESSOR	1	
* 35	981-373	TUBE (D)	2	FOR NOISE SUPPRESSOR
* 36	992-635	EARTH TERMINAL	1	FOR NOISE SUPPRESSOR
* 37	995-350	REVERSING SWITCH	1	FOR GBR,ITA,FRG,FRA,HOL
* 38	981-373	TUBE (D)	2	FOR CORD
* 39A	500-436Z	CORD	1	(CORD ARMOR D8.2) FOR GBR (240V)
40	984-750	TAPPING SCREW (W/FLANGE) D4X16	2	
41	937-631	CORD CLIP	1	

*:ALTERNATIVE PARTS

PARTS

DW15Y

ITEM No.	CODE No.	DESCRIPTION	No. USED	REMARKS
* 42	930-487	CORD ARMOR D8.2	1	
43	981-122	SPECIAL SCREW M6X22	1	
47	950-514	TAPPING SCREW D4X40	2	
* 48	318-330	SWITCH AND HANDLE COVER SET 220V-240V	1	INCLUD.28A,29A TILL 7.1999

STANDARD ACCESSORIES

ITEM No.	CODE No.	DESCRIPTION	No. USED	REMARKS
501B	310-904	CASE	1	
502	983-006	+ DRIVER BIT NO.2 65L	1	