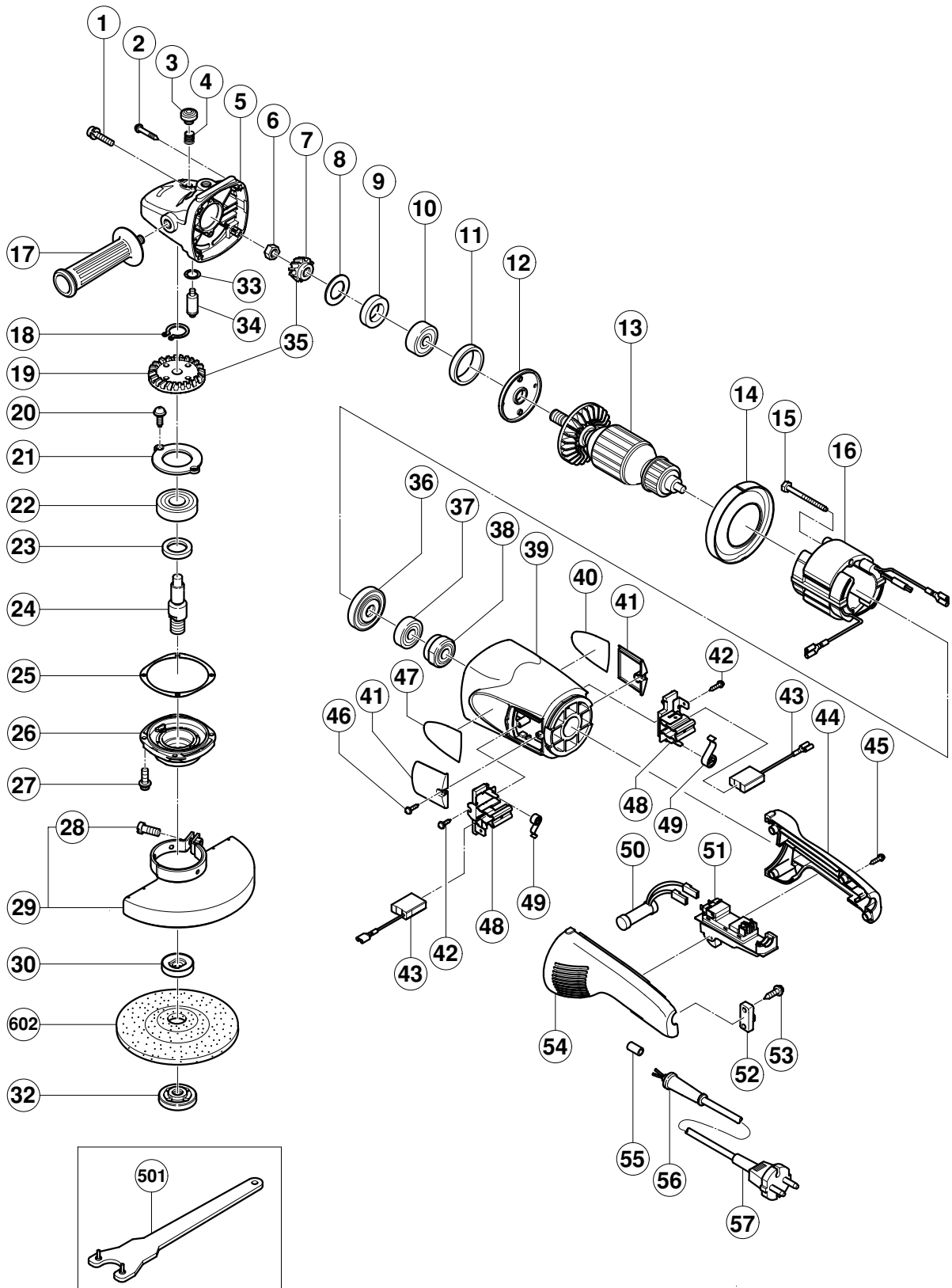


ELECTRIC TOOL PARTS LIST

■ DISC GRINDER
Model G 18U2

2001·9·25
(E1)



PARTS

G 18U2

ITEM NO.	CODE NO.	DESCRIPTION	NO. USED	REMARKS
1	315-636	SEAL LOCK SCREW (W/SP.WASHER)M5X14(BLACK)	2	
2	301-654	TAPPING SCREW (W/FLANGE) D5X35	4	
3	306-888	PUSHING BUTTON	1	
4	320-219	SPRING	1	
5	320-217	GEAR COVER ASS'Y	1	INCLUD.3,4,33,34
6	320-226	SPECIAL NUT M10	1	
7	320-243	PINION	1	
8	320-221	SEAL WASHER	1	
9	320-222	FELT PACKING	1	
10	630-1DD	BALL BEARING 6301DDCMPS2L	1	
11	994-208	RUBBER RING (B)	1	
12	320-220	BEARING COVER (A)	1	
13	360-558E	ARMATURE 220V-240V	1	
14	320-215	FAN GUIDE	1	
15	961-501	HEX. HD. TAPPING SCREW D5X60	2	
16	340-501E	STATOR 220V-230V	1	
17	937-981	SIDE HANDLE FOR M14	1	
18	939-542	RETAINING RING FOR D12 SHAFT (10 PCS.)	1	
19	320-242	GEAR	1	
20	949-236	MACHINE SCREW M5X10 (10 PCS.)	2	
21	320-229	BEARING COVER (B)	1	
22	630-2DD	BALL BEARING 6302DDCMPS2L	1	
23	990-852	FELT PACKING (B)	1	
24	320-234	SPINDLE	1	
25	320-228	SEAL PLATE	1	
26	320-227	PACKING GLAND	1	
27	994-192	HEX. SOCKET HD. BOLT (W/FLANGE) M5X16	4	
28	306-887	BOLT M8X22	1	
29	306-124	WHEEL GUARD ASS'Y	1	INCLUD.28
30	937-907Z	WHEEL WASHER (A)	1	
32	937-909Z	WHEEL NUT M14X2	1	
33	320-218	O-RING	1	
34	306-890	LOCK PIN	1	
35	320-241	GEAR ASS'Y	1	INCLUD.7,19
36	320-216	DUST SEAL	1	
37	600-0VV	BALL BEARING 6000VVCMP2L	1	
38	320-244	BEARING BUSHING	1	
39	320-214	HOUSING ASS'Y	1	INCLUD.38
40		NAME PLATE	1	
41	320-232	BRUSH COVER	2	
42	305-812	TAPPING SCREW (W/FLANGE) D4X16 (BLACK)	2	
43	999-089	CARBON BRUSH (AUTO STOP TYPE) (1 PAIR)	1	
43	999-061	CARBON BRUSH 7X17X22.5 (1 PAIR)	1	
44	320-231	HANDLE (B)	1	
45	305-812	TAPPING SCREW (W/FLANGE) D4X16 (BLACK)	4	
46	305-812	TAPPING SCREW (W/FLANGE) D4X16 (BLACK)	2	
47		HITACHI LABEL	1	
48	320-233	BRUSH HOLDER	2	
49	320-245	SPRING	2	
50	320-236	RESISTOR	1	
51	320-235	SWITCH (2P PILLAR TYPE) W/SAFETY LOCK	1	

