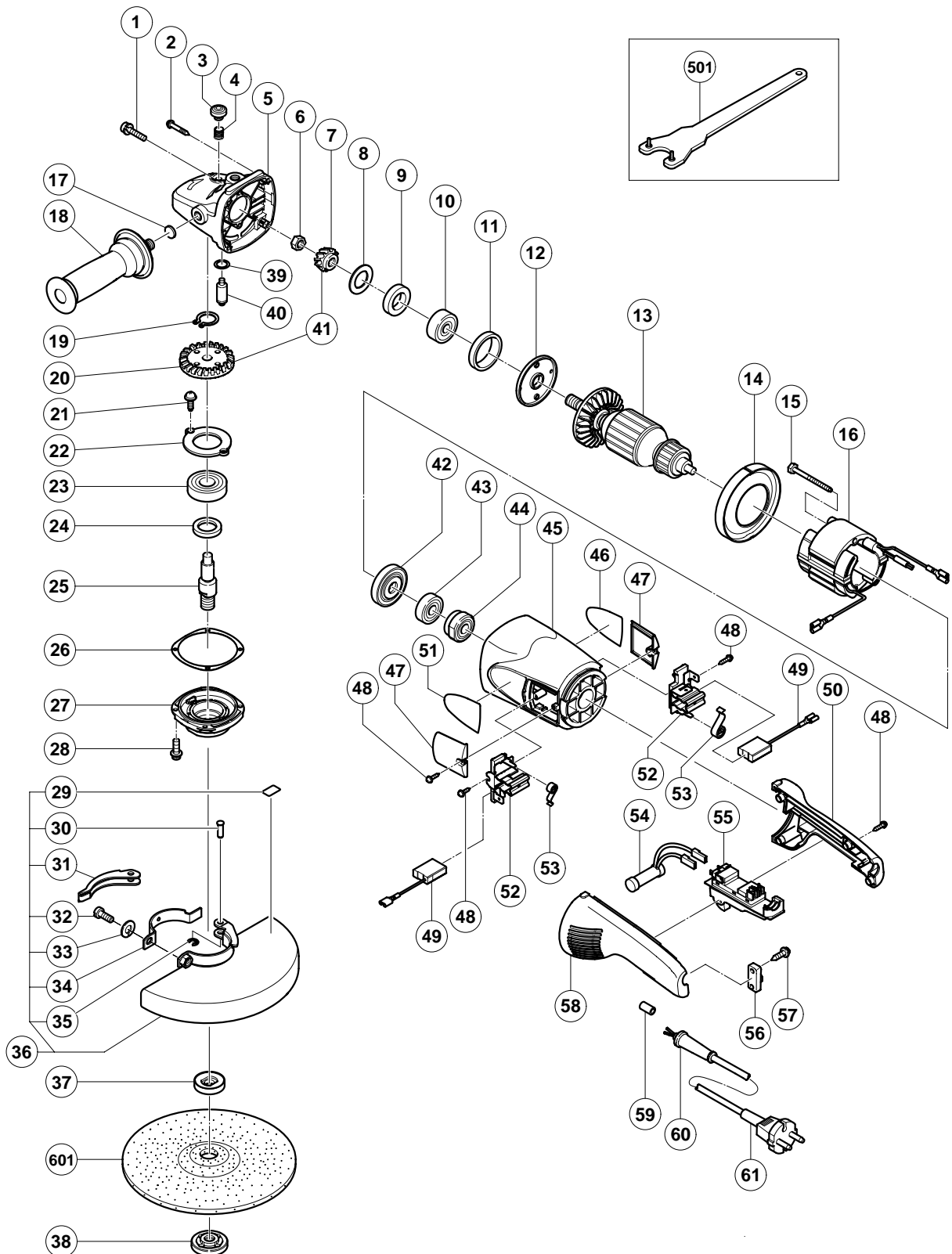


ELECTRIC TOOL PARTS LIST

■ DISC GRINDER
Model G 23UA2

2002・11・30
(E1)



PARTS

G 23UA2

ITEM NO.	CODE NO.	DESCRIPTION	NO. USED	REMARKS	
1	315-636	SEAL LOCK SCREW (W/SP.WASHER) M5X14 (BLACK)	2		
2	301-654	TAPPING SCREW (W/FLANGE) D5X35	4		
3	306-888	PUSHING BUTTON	1		
4	320-219	SPRING	1		
5	320-217	GEAR COVER ASS'Y	1	INCLUD. 3, 4, 17, 39, 40	
6	320-226	SPECIAL NUT M10	1		
7	320-225	PINION	1		
8	320-221	SEAL WASHER	1		
9	320-222	FELT PACKING	1		
10	630-1DD	BALL BEARING 6301DDCMPS2L	1		
11	994-208	RUBBER RING (B)	1		
12	320-220	BEARING COVER (A)	1		
13	360-594E	ARMATURE 220V-230V	1		
14	320-215	FAN GUIDE	1		
15	984-271	HEX. HD. TAPPING SCREW D5X75	2		
16	340-546E	STATOR 220V-230V	1		
17	937-033	FELT WASHER	1		
18	321-542	SIDE HANDLE	1		
19	939-542	RETAINING RING FOR D12 SHAFT (10 PCS.)	1		
20	320-224	GEAR	1		
21	949-236	MACHINE SCREW M5X10 (10 PCS.)	2		
22	320-229	BEARING COVER (B)	1		
23	630-2DD	BALL BEARING 6302DDCMPS2L	1		
24	990-852	FELT PACKING (B)	1		
25	320-234	SPINDLE	1		
26	320-228	SEAL PLATE	1		
27	320-227	PACKING GLAND	1		
28	994-192	HEX. SOCKET HD. BOLT (W/FLANGE) M5X16	4		
29	311-492	LABEL	1		
30	321-546	SET PIN	1		
31	321-545	LEVER	1		
32	306-887	BOLT M8X22	1		
33	949-457	SPRING WASHER M8 (10 PCS.)	1		
34	321-544	SET PIECE	1		
35	673-489	RETAINING RING (E-TYPE) FOR D5 SHAFT	1		
36	321-547	WHEEL GUARD ASS'Y	1	INCLUD. 29-35	
37	937-907Z	WHEEL WASHER (A)	1		
38	937-909Z	WHEEL NUT M14X2	1		
39	320-218	O-RING	1		
40	306-890	LOCK PIN	1		
41	320-223	GEAR AND PINION ASS'Y	1	INCLUD. 7, 20	
42	320-216	DUST SEAL	1		
43	600-0VV	BALL BEARING 6000VVCMP2L	1		
44	321-536	BEARING BUSHING	1		
45	321-535	HOUSING ASS'Y	1	INCLUD. 44	
*	46	NAME PLATE	1		
	47	320-232	BRUSH COVER	2	
	48	305-812	TAPPING SCREW (W/FLANGE) D4X16 (BLACK)	8	
*	49	999-061	CARBON BRUSH 7X17X22.5 (1 PAIR)	1	
*	49	999-089	CARBON BRUSH (AUTO STOP TYPE) (1 PAIR)	1	
*	49	999-061	CARBON BRUSH 7X17X22.5 (1 PAIR)	2	FOR SUI

STANDARD ACCESSORIES

G 23UA2

ITEM NO.	CODE NO.	DESCRIPTION	NO. USED	REMARKS	
501	937-913Z	WRENCH	1		

OPTIONAL ACCESSORIES

ITEM NO.	CODE NO.	DESCRIPTION	NO. USED	REMARKS	
601	316-825	D. C. WHEELS 230MM A24R (25 PCS.)	1		
602	310-337	SUPER WASHER	1		