

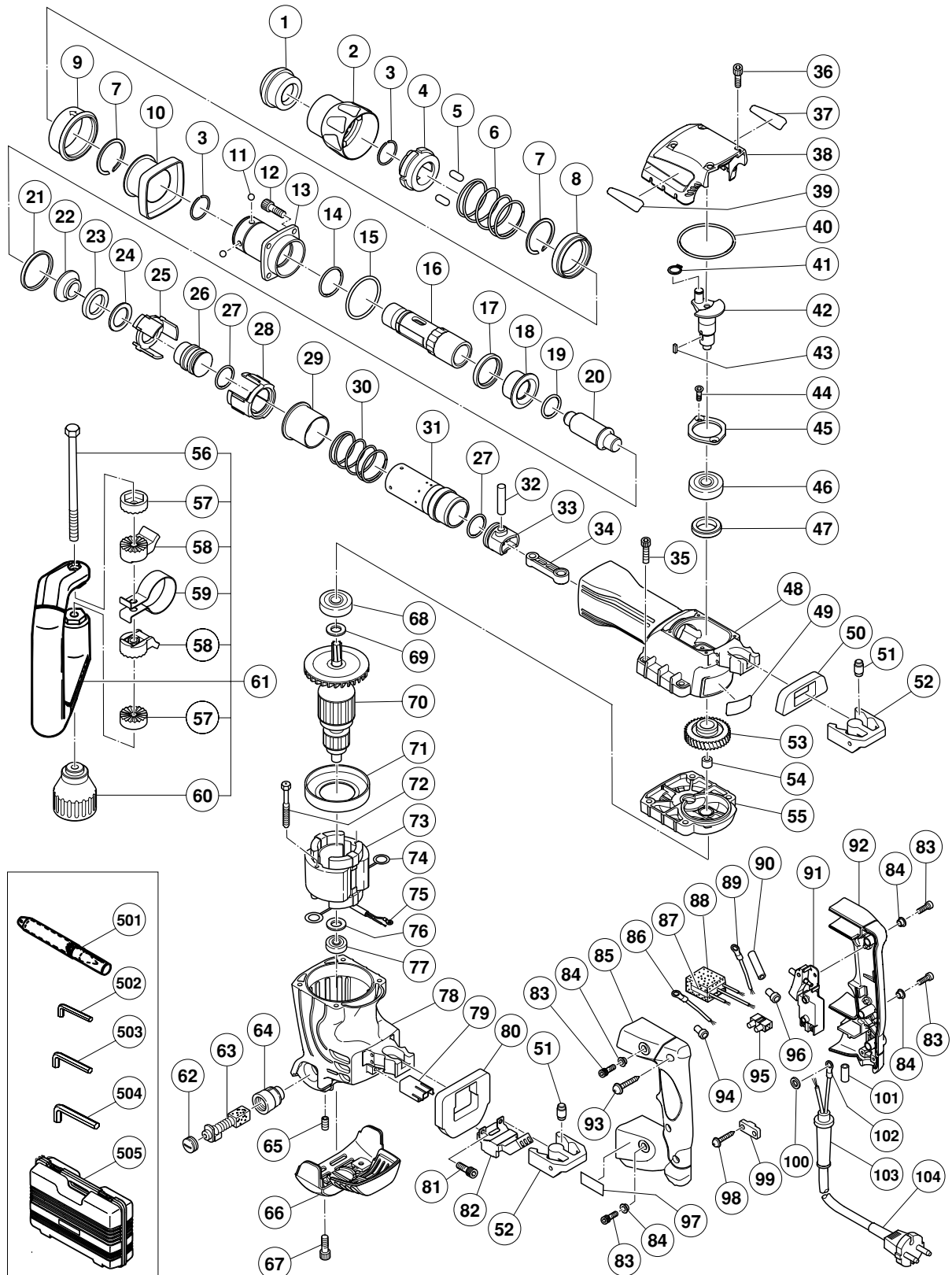
ELECTRIC TOOL PARTS LIST

■ HAMMER

2002 · 5 · 30

Model H 45MR

(E1)



PARTS

H 45MR

ITEM NO.	CODE NO.	DESCRIPTION	NO. USED	REMARKS
1	315-529	FRONT CAP	1	
2	320-802	GRIP (A)	1	
3	320-803	RING	2	
4	320-804	NEEDLE HOLDER	1	
5	313-421	NEEDLE ROLLER D8X20	2	
6	320-806	SPRING (A)	1	
7	317-088	RETAINING RING D42	2	
8	320-810	BALL HOLDER	1	
9	320-807	GRIP (B)	1	
10	320-808	GRIP (C)	1	
11	959-150	STEEL BALL D6.35 (10 PCS.)	4	
12	981-942	SEAL LOCK HEX. SOCKET HD. BOLT M6X25	4	
13	320-809	FRONT COVER	1	
14	980-879	O-RING (S-34)	1	
15	990-067	O-RING (1AS-50)	1	
16	320-805	RETAINER SLEEVE	1	
17	320-812	DAMPER (A)	1	
18	320-811	HAMMER HOLDER (A)	1	
19	319-572	O-RING (S-25)	1	
20	320-813	SECOND HAMMER	1	
21	320-817	DAMPER (C)	1	
22	320-814	HAMMER HOLDER (B)	1	
23	320-815	DAMPER (B)	1	
24	320-835	WASHER	1	
25	320-816	HAMMER HOLDER (C)	1	
26	320-822	STRIKER	1	
27	320-823	O-RING	2	
28	320-818	CYLINDER HOLDER	1	
29	320-820	SLEEVE (A)	1	
30	320-821	SPRING (C)	1	
31	320-819	CYLINDER	1	
32	320-826	PISTON PIN	1	
33	320-824	PISTON	1	
34	320-825	CONNECTING ROD	1	
35	986-940	SEAL LOCK HEX. SOCKET HD. BOLT M6X45	4	
36	983-162	SEAL LOCK HEX. SOCKET HD. BOLT M4X12	4	
37		HITACHI LABEL	1	
38	320-831	CRANK COVER	1	
39		HITACHI LABEL	1	
40	956-996	O-RING (1AS-60)	1	
41	939-540	RETAINING RING FOR D10 SHAFT (10 PCS.)	1	
42	320-829	CRANK SHAFT	1	
43	930-511	FEATHER KEY 4X4X10	1	
44	980-760	SEAL LOCK HEX.SOCKET FLAT HD. BOLT M5X12	2	
45	980-761	BEARING COVER (A)	1	
46	620-3DD	BALL BEARING 6203DDCMPS2L	1	
47	310-119	OIL SEAL	1	
48	320-828	CYLINDER CRANK CASE	1	
* 49		NAME PLATE	1	
50	320-837	HANDLE PACKING (A)	1	
51	310-124	HANDLE DAMPER	8	

PARTS

H 45MR

ITEM NO.	CODE NO.	DESCRIPTION	NO. USED	REMARKS
52	310-123	TRANSATORY UNIT	2	
53	320-830	FIRST GEAR	1	
54	939-299	NEEDLE BEARING (M661)	1	
55	320-841	GEAR COVER ASS'Y	1	INCLUD.54
56	317-107	BOLT M8	1	
57	317-106	HANDLE HOLDER (B)	2	
58	317-105	HANDLE HOLDER (A)	2	
59	320-635	BAND	1	
60	317-108	GRIP	1	
61	317-103	SIDE HANDLE ASS'Y	1	INCLUD.56-60
62	935-829	BRUSH CAP	2	
63	999-073	CARBON BRUSH (AUTO STOP TYPE) (1 PAIR)	2	
64	971-001	BRUSH HOLDER	2	
65	938-477	HEX. SOCKET SET SCREW M5X8	2	
66	320-834	TAIL COVER	1	
67	877-839	SEAL LOCK HEX. SOCKET HD. BOLT M5X10	2	
68	620-1DD	BALL BEARING 6201DDCMPS2L	1	
69	302-429	DUST WASHER (B)	1	
* 70	360-571C	ARMATURE 110V	1	
* 70	360-571U	ARMATURE ASS'Y 120V	1	INCLUD.68,69,76,77
* 70	360-571E	ARMATURE 220V-230V	1	
* 70	360-571F	ARMATURE 240V	1	
71	320-832	FAN GUIDE	1	
72	953-174	HEX. HD. TAPPING SCREW D5X55	2	
* 73	340-519C	STATOR ASS'Y 110V	1	INCLUD.74
* 73	340-519G	STATOR ASS'Y 120V	1	INCLUD.74,75
* 73	340-519H	STATOR ASS'Y 220V-230V	1	INCLUD.74,75
* 73	340-519E	STATOR ASS'Y 220V-230V	1	INCLUD.74 FOR GBR (230V),EUROPE,NOR, SWE,DEN,FIN,SUI
* 73	340-519F	STATOR ASS'Y 240V	1	INCLUD.74
74	930-703	BRUSH TERMINAL	2	
* 75	930-804	TERMINAL M4.0 (10 PCS.)	1	EXCEPT FOR AUS,GBR,EUROPE,NOR,SWE, DEN,FIN,SUI
76	982-631	WASHER (A)	1	
77	608-VVM	BALL BEARING 608VVC2PS2L	1	
78	320-833	HOUSING ASS'Y	1	INCLUD.64,65
79	320-836	SLEEVE (B)	1	
80	320-838	HANDLE PACKING (B)	1	
81	984-509	SEAL LOCK HEX. SOCKET HD. BOLT M5X14	2	
* 82	980-754	INTERNAL WIRE HOLDER	1	
* 82	310-424	INTERNAL WIRE HOLDER	1	FOR AUS,GBR,EUROPE,NOR,SWE,DEN,FIN,SUI
83	991-690	SEAL LOCK HEX. SOCKET HD. BOLT M5X12	4	
84	991-711	DISTANCE PIECE (B)	4	
85	320-839	HANDLE (A)	1	
* 86	990-861	INTERNAL WIRE	1	FOR AUS,GBR,EUROPE,NOR,SWE,DEN,FIN,SUI
* 87	994-273	NOISE SUPPRESSOR	1	FOR AUS,GBR,EUROPE,NOR,SWE,DEN,FIN,SUI
* 88	317-492	SUPPORT (B)	1	FOR NOISE SUPPRESSOR
* 89	981-974	INTERNAL WIRE	1	FOR AUS,GBR,EUROPE,NOR,SWE,DEN,FIN,SUI
* 90		VINYL TUBE	2	FOR USA,CAN
91	306-143	SWITCH (B) (1P SCREW TYPE) W/LOCK	1	
92	320-840	HANDLE (B)	1	

PARTS

H 45MR

ITEM NO.	CODE NO.	DESCRIPTION	NO. USED	REMARKS	
	93	307-028	TAPPING SCREW (W/FLANGE) D4X25 (BLACK)	3	
*	94	959-140	CONNECTOR 50091 (10 PCS.)	1	FOR AUS,GBR,EUROPE,NOR,SWE,DEN,FIN,SUI
*	95	938-307	PILLAR TERMINAL	1	FOR AUS,GBR,EUROPE,NOR,SWE,DEN,FIN,SUI, USA,CAN
*	96	959-141	CONNECTOR 50092 (10 PCS.)	1	EXCEPT FOR USA,CAN
	97		SDS MAX LABEL	1	
	98	984-750	TAPPING SCREW (W/FLANGE) D4X16	2	
*	99	960-266	CORD CLIP	1	
*	99	981-987Z	CORD CLIP	1	FOR SUI
*	100	949-423	WASHER M4 (10 PCS.)	1	FOR AUS,GBR,EUROPE,NOR,SWE,DEN,FIN,SUI
*	101	981-373	TUBE (D)	2	FOR CORD
*	102	980-063	TERMINAL	1	FOR AUS,GBR (110V),EUROPE,NOR,SWE,DEN,FIN,SUI
*	102	992-810	TERMINAL	1	FOR GBR (230V)
*	102	930-804	TERMINAL M4.0 (10 PCS.)	1	FOR USA,CAN
*	103	953-327	CORD ARMOR D8.8	1	
*	103	938-051	CORD ARMOR D10.1	1	
*	104	500-394Z	CORD	1	(CORD ARMOR D10.1)
*	104	500-408Z	CORD	1	(CORD ARMOR D8.8) FOR AUS
*	104	500-446Z	CORD	1	(CORD ARMOR D8.8) FOR GBR (230V)
*	104	500-454Z	CORD	1	(CORD ARMOR D8.8) FOR GBR (110V)
*	104	500-390Z	CORD	1	(CORD ARMOR D8.8) FOR EUROPE,NOR,SWE,DEN,FIN
*	104	500-391Z	CORD	1	(CORD ARMOR D8.8) FOR SUI
*	104	500-434Z	CORD	1	(CORD ARMOR D8.8) FOR USA,CAN

STANDARD ACCESSORIES

ITEM NO.	CODE NO.	DESCRIPTION	NO. USED	REMARKS	
	501	313-471	BULL POINT (SDS MAX) 280L	1	
*	502	943-277	HEX. BAR WRENCH 3MM	1	FOR AUS,GBR,EUROPE,NOR,SWE,DEN,FIN,SUI
	503	944-458	HEX. BAR WRENCH 4MM	1	
	504	944-459	HEX. BAR WRENCH 5MM	1	
	505	320-842	CASE	1	

OPTIONAL ACCESSORIES

ITEM NO.	CODE NO.	DESCRIPTION	NO. USED	REMARKS	
	601	313-472	BULL POINT (SDS MAX) 400L	1	
	602	313-473	COLD CHISEL (SDS MAX) 280MM	1	
	603	313-474	COLD CHISEL (SDS MAX) 400MM	1	
	604	313-475	CUTTER (SDS MAX) W50X400L	1	
	605	313-476	SCOOP (SDS MAX) 400L	1	
	606	313-478	RAMMER (SDS MAX) 150MM X 150MM	1	
	607	313-479	SHANK (SDS MAX)FOR RAMMER,BUSHING TOOL	1	
	608	981-840	GREASE (A) FOR HAMMER.HAMMER DRILL (30G)	1	
	609	308-471	GREASE FOR HAMMER.HAMMER DRILL (70G)	1	
*	610	980-927	GREASE FOR HAMMER.HAMMER DRILL (500G)	1	EXCEPT FOR USA,CAN