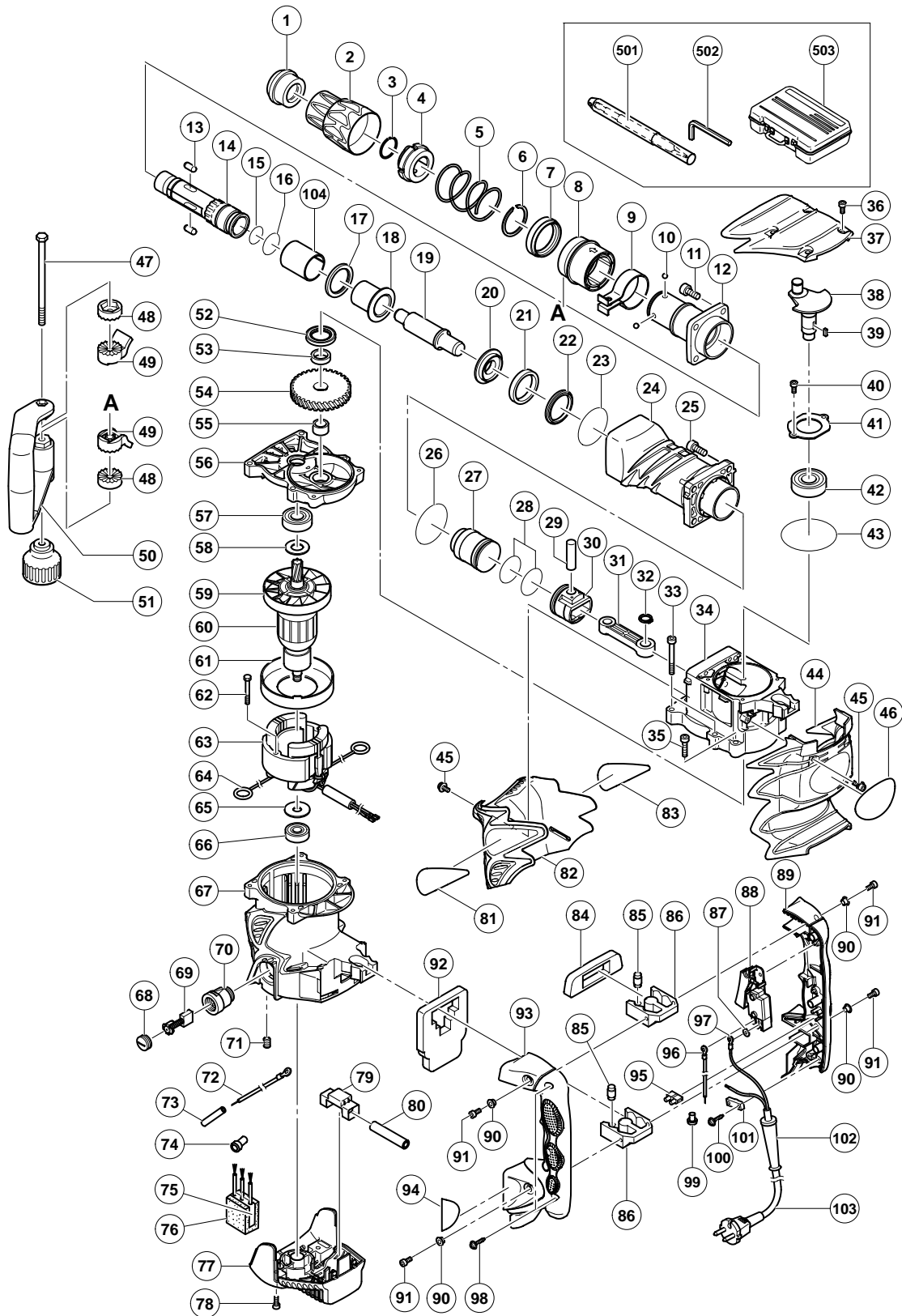


ELECTRIC TOOL PARTS LIST

DEMOLITION HAMMER Model H 60MR

2004 • 12 • 30

(E1)



PARTS

H 60MR

ITEM NO.	CODE NO.	DESCRIPTION	NO. USED	REMARKS
1	315-529	FRONT CAP	1	
2	324-025	GRIP (A)	1	
3	320-803	RING	1	
4	320-804	NEEDLE HOLDER	1	
5	324-027	SPRING (A)	1	
6	317-088	RETAINING RING D42	1	
7	320-810	BALL HOLDER	1	
8	324-028	GRIP (B)	1	
9	320-635	BAND	1	
10	959-150	STEEL BALL D6.35 (10 PCS.)	4	
11	985-479	SEAL LOCK HEX. SOCKET HD. BOLT M8X25	4	
12	324-029	FRONT COVER	1	
13	313-421	NEEDLE ROLLER D8X20	2	
14	324-026	RETAINER SLEEVE	1	
15	872-470	O-RING (S-26)	1	
16	872-767	O-RING (S-32)	1	
17	317-094	DAMPER (B)	1	
18	324-030	HAMMER HOLDER (B)	1	
19	324-031	SECOND HAMMER	1	
20	317-091	HAMMER HOLDER (A)	1	
21	324-032	DAMPER (A)	1	
22	317-095	DAMPER WASHER	1	
23	317-119	O-RING (S-56)	1	
24	324-034	CYLINDER CASE	1	
25	995-400	HEX. SOCKET HD. BOLT (W/FLANGE) M8X30	4	
26	956-996	O-RING (1AS-60)	1	
27	324-033	STRIKER	1	
28	985-454	O-RING (A) (FPM810)	2	
29	301-509	PISTON PIN	1	
30	317-084	PISTON	1	
31	317-082	CONNECTING ROD	1	
32	939-543	RETAINING RING FOR D14 SHAFT (10 PCS.)	1	
33	301-567	SEAL LOCK HEX. SOCKET HD. BOLT M6X55	4	
34	324-035	CRANK CASE	1	
35	324-056	SEAL LOCK HEX. SOCKET HD. BOLT M6X35	2	
36	990-079	SEAL LOCK HEX. SOCKET HD. BOLT M5X16	4	
37	324-037	CRANK COVER	1	
38	317-078	CRANK SHAFT	1	
39	940-533	FEATHER KEY 3X3X10	1	
40	984-509	SEAL LOCK HEX. SOCKET HD. BOLT M5X14	2	
41	985-443	BEARING COVER	1	
42	620-4DD	BALL BEARING 6204DDCMPS2L	1	
43	301-506	O-RING (S-75)	1	
44	324-038	BACK COVER	1	
45	998-471	HEX. SOCKET HD. BOLT M5X12	3	
46		NAME PLATE	1	
47	317-107	BOLT M8	1	
48	317-106	HANDLE HOLDER (B)	2	
49	317-105	HANDLE HOLDER (A)	2	
50	317-103	SIDE HANDLE ASS'Y	1	INCLUD. 9, 47-49, 51
51	317-108	GRIP	1	

PARTS

H 60MR

ITEM NO.	CODE NO.	DESCRIPTION	NO. USED	REMARKS
52	995-403	OIL SEAL	1	
53	995-402	DISTANCE RING (C)	1	
54	317-080	FIRST GEAR	1	
55	985-442	NEEDLE BEARING (A) (BK1512)	1	
56	324-048	GEAR COVER ASS'Y	1	INCLUD. 55
57	620-3DD	BALL BEARING 6203DDCMPS2L	1	
58	992-841	BEARING WASHER	1	
59	996-370	FAN	1	
*	60	360-691U	ARMATURE ASS'Y 120V	1 INCLUD. 57-59, 65, 66
*	60	360-691E	ARMATURE ASS'Y 230V	1 INCLUD. 59
	61	305-610	FAN GUIDE	1
	62	953-121	HEX. HD. TAPPING SCREW D5X50	2
*	63	340-608G	STATOR ASS'Y 120V	1 INCLUD. 64
*	63	340-608E	STATOR ASS'Y 230V	1 INCLUD. 64
	64	945-932	BRUSH TERMINAL	2
	65	944-954	BEARING WASHER	1
	66	620-1DD	BALL BEARING 6201DDCMPS2L	1
	67	324-055	HOUSING ASS'Y	1 INCLUD. 70, 71
	68	940-540	BRUSH CAP	2
	69	999-074	CARBON BRUSH (AUTO STOP TYPE) (1 PAIR)	2
	70	956-984	BRUSH HOLDER	2
	71	938-477	HEX. SOCKET SET SCREW M5X8	2
*	72	324-122	INTERNAL WIRE 235L	1 EXCEPT FOR USA, CAN
*	73		VINYL TUBE (I.D.7XT0.5X30)	2 FOR USA, CAN
*	74	959-140	CONNECTOR 50091 (10 PCS.)	1 EXCEPT FOR USA, CAN
*	75	994-273	NOISE SUPPRESSOR	1 EXCEPT FOR USA, CAN
*	76	317-492	SUPPORT (B)	1 EXCEPT FOR USA, CAN
	77	324-041	TAIL COVER	1
	78	317-245	SEAL LOCK HEX. SOCKET HD. BOLT M5X22	2
	79	324-045	SLEEVE (B)	1
	80		VINYL TUBE (I.D.9.5XT0.56X85)	1
	81		HITACHI LABEL	1
	82	324-036	CRANK CASE COVER	1
	83		HITACHI LABEL	1
	84	324-046	HANDLE PACKING (A)	1
	85	310-124	HANDLE DAMPER	8
	86	310-123	TRANSATORY UNIT	2
*	87	949-423	WASHER M4 (10 PCS.)	1 EXCEPT FOR USA, CAN
	88	306-143	SWITCH (B) (1P SCREW TYPE) W/LOCK	1
	89	324-042	HANDLE (A)	1
	90	991-711	DISTANCE PIECE (B)	4
	91	991-690	SEAL LOCK HEX. SOCKET HD. BOLT M5X12	4
	92	324-047	HANDLE PACKING (B)	1
	93	324-043	HANDLE (B)	1
	94		SDS MAX LABEL	1
	95	938-307	PILLAR TERMINAL	1
*	96	981-974	INTERNAL WIRE	1 EXCEPT FOR USA, CAN
*	97	980-063	TERMINAL	1 EXCEPT FOR USA, CAN, SUI
	98	307-028	TAPPING SCREW (W/FLANGE) D4X25 (BLACK)	3
*	99	959-141	CONNECTOR 50092 (10 PCS.)	1 EXCEPT FOR USA, CAN
	100	984-750	TAPPING SCREW (W/FLANGE) D4X16	2

