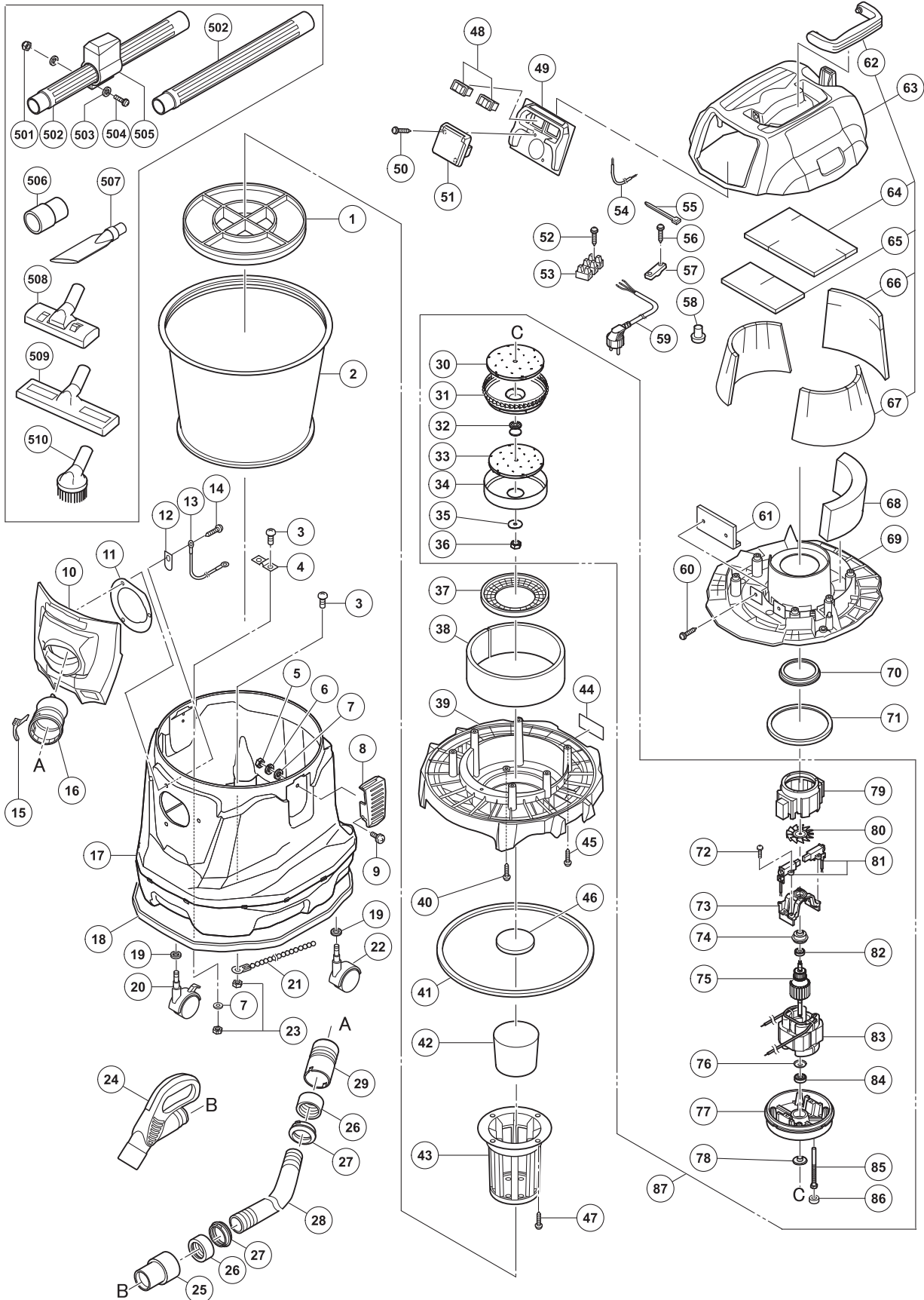


ELECTRIC TOOL PARTS LIST

DUST COLLECTOR Model RP 35YB

2007·12·21
(E1)



PARTS

RP 35YB

ITEM NO.	CODE NO.	DESCRIPTION	NO. USED	REMARKS
1	325-869	FILTER CAGE	1	
2	325-626	DRY DUST FILTER	1	
3	949-216	MACHINE SCREW M4X10 (10 PCS.)	3	
4	321-075	WIRE HOLDER	1	
5	311-839	HEX. CAP NUT M4	6	
6	949-453	SPRING WASHER M4 (10 PCS.)	4	
7	949-423	WASHER M4 (10 PCS.)	4	
8	325-867	CLAMP	2	
9	949-217	MACHINE SCREW M4X12 (10 PCS.)	4	
10	325-972	JOINT COVER (B)	1	
11	325-862	JOINT COVER PACKING	1	
12	325-926	EARTH PLATE	1	
13	325-871	INTERNAL WIRE (D)	1	
14	307-811	TAPPING SCREW (W/FLANGE) D4X16 (BLACK)	3	
15	321-014	HOSE STOPPER	1	
16	325-864	HOSE JOINT	1	
17	325-860	TANK (PLS)	1	
18	325-906	BUMPER (A)	1	
19	949-433	BOLT WASHER M8 (10 PCS.)	3	
20	325-859	CASTER D50 (W/STOPPER)	1	
21	325-870	EARTH CHAIN	1	
22	325-858	CASTER D50	2	
23	949-554	NUT M4 (10 PCS.)	3	
24	325-901	JOINT HANDLE	1	
25	320-986	SLEEVE (B) ID38	1	
26	321-065	SCREW RING	2	
27	321-066	CLICK RING	2	
28	328-684	HOSE ASS'Y ID38	1	INCLUD. 25-27, 29
29	320-985	SLEEVE (A) ID38	1	
30	326-218	FAN (A)	1	
31	326-225	CASING (A)	1	
32	326-226	SPACER	1	
33	326-217	FAN (B)	1	
34	326-227	CASING (B)	1	
35	326-228	SPECIAL WASHER	1	
36	949-568	LOCK NUT M8 (10 PCS.)	1	
37	325-880	SUPPORT RING (B)	1	
38	325-875	MOTOR BASE FILTER	1	
39	325-872	MOTOR BASE	1	
40	307-811	TAPPING SCREW (W/FLANGE) D4X16 (BLACK)	3	
41	325-873	MOTOR BASE PACKING	1	
42	325-866	FLOAT	1	
43	325-865	FLOAT HOLDER	1	
44		NAME PLATE	1	
45	301-653	TAPPING SCREW (W/FLANGE) D4X20 (BLACK)	6	
46	325-874	MOTOR FILTER	1	
47	994-810	SCREW (PLASTIC TIE) D4X16	4	
48	325-931	SWITCH (B)	2	
49	328-766	SWITCH HOLDER	1	
50	313-687	TAPPING SCREW (W/FLANGE) D3X16 (BLACK)	2	

