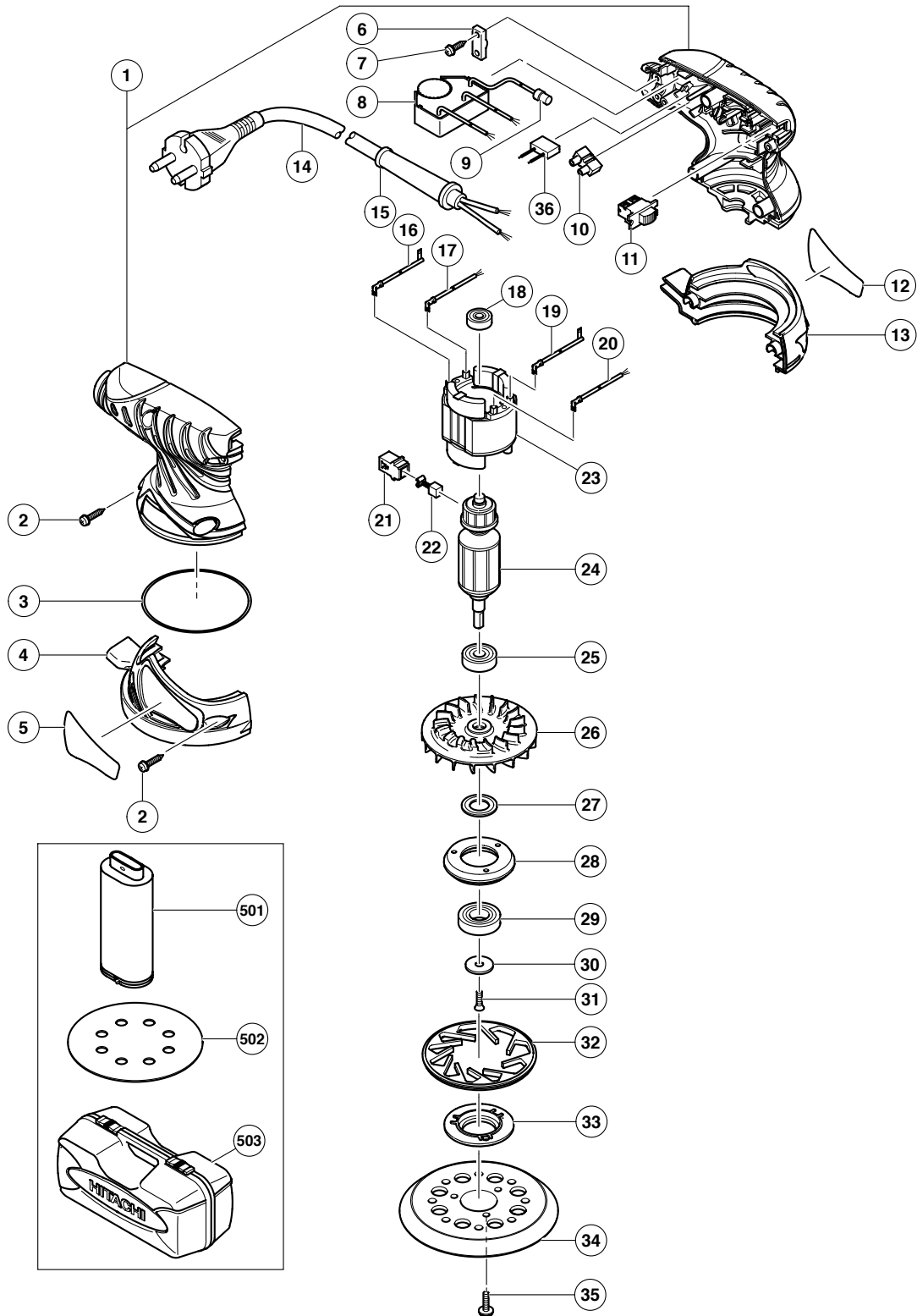


## ELECTRIC TOOL PARTS LIST

**RANDOM ORBIT SANDER**  
**Model SV 13YA**

**2005 · 6 · 15**  
**(E1)**



## PARTS

SV 13YA

ITEM NO.	CODE NO.	DESCRIPTION	NO. USED	REMARKS
1	324-249	HOUSING (A).(B) SET	1	
2	301-653	TAPPING SCREW (W/FLANGE) D4X20 (BLACK)	7	
3	993-195	O-RING	1	
4	324-207	LOWER COVER (B)	1	
5		NAME PLATE	1	
6	937-631	CORD CLIP	1	
7	984-750	TAPPING SCREW (W/FLANGE) D4X16	2	
*	8	324-245	CONTROLLER CIRCUIT 110V	1 FOR GBR (110V)
*	8	324-246	CONTROLLER CIRCUIT 120V	1 FOR USA, CAN
*	8	324-248	CONTROLLER CIRCUIT 220V	1 FOR CHN
*	8	324-244	CONTROLLER CIRCUIT 230V	1
*	8	324-247	CONTROLLER CIRCUIT 240V	1 FOR AUS
	9	959-140	CONNECTOR 50091 (10 PCS.)	1
	10	938-307	PILLAR TERMINAL	1
	11	311-948	SLIDE SWITCH (1P SCREW TYPE)	1
	12		HITACHI LABEL	1
	13	324-206	LOWER COVER (A)	1
*	14	500-409Z	CORD	1 (CORD ARMOR D8.8)
*	14	500-461Z	CORD	1 (CORD ARMOR D8.8) FOR GBR (110V)
*	14	500-435Z	CORD	1 (CORD ARMOR D8.8) FOR GBR (230V)
*	14	500-447Z	CORD	1 (CORD ARMOR D8.8) FOR SUI
*	14	500-240Z	CORD	1 (CORD ARMOR D8.8) FOR USA, CAN
*	14	500-439Z	CORD	1 (CORD ARMOR D8.8) FOR AUS, NZL
*	14	500-468Z	CORD	1 (CORD ARMOR D8.8) FOR CHN
	15	953-327	CORD ARMOR D8.8	1
	16	322-764	INTERNAL WIRE (BROWN)	1
	17	322-761	TAB TERMINAL (BLUE)	1
	18	626-VVM	BALL BEARING 626VVC2PS2L	1
	19	322-763	INTERNAL WIRE (BLUE)	1
	20	322-762	TAB TERMINAL (BROWN)	1
	21	930-483	BRUSH HOLDER	2
	22	999-041	CARBON BRUSH (1 PAIR)	2
*	23	340-616C	STATOR 110V	1
*	23	340-616D	STATOR 120V	1
*	23	340-616E	STATOR 220V-230V	1
*	23	340-616F	STATOR 240V	1
*	24	360-696C	ARMATURE 110V	1
	24	360-696U	ARMATURE ASS'Y 120V	1 INCLUD. 17, 24
*	24	360-696E	ARMATURE 220V-230V	1
*	24	360-696F	ARMATURE 240V	1
	25	629-VVM	BALL BEARING 629VVC2PS2L	1
	26	324-521	BALANCE FAN	1
	27	324-208	DUST WASHER	1
	28	324-212	BEARING HOLDER	1
	29	600-2DW	BALL BEARING 6002DDWCMPS2L	1
	30	309-422	WASHER	1
	31	993-244	SEAL LOCK FLAT HD. SCREW M4X12	1
	32	324-210	BRAKE	1
	33	324-211	BEARING COVER	1
	34	324-209	PAD (PRESSURE SENSITIVE TYPE)	1
	35	307-109	SEAL LOCK SCREW (W/WASHERS) M4X16 (BLACK)	3



**STANDARD ACCESSORIES**

SV 13YA

ITEM NO.	CODE NO.	DESCRIPTION	NO. USED	REMARKS	
* 501	310-339	DUST BAG	1		
* 501	323-004	DUST BAG	1	FOR USA, CAN	
502	308-519	SANDING DISCS 125MM A-P120 (5 PCS.)	1		
503	324-613	CASE	1		

**OPTIONAL ACCESSORIES**

ITEM NO.	CODE NO.	DESCRIPTION	NO. USED	REMARKS	
601	308-516	SANDING DISCS 125MM A-P40 (5 PCS.)	1		
602	308-517	SANDING DISCS 125MM A-P60 (5 PCS.)	1		
603	308-518	SANDING DISCS 125MM A-P80 (5 PCS.)	1		
604	308-520	SANDING DISCS 125MM A-P180 (5 PCS.)	1		
605	308-521	SANDING DISCS 125MM A-P240 (5 PCS.)	1		
606	308-522	SANDING DISCS 125MM A-P320 (5 PCS.)	1		
607	308-523	SANDING DISCS 125MM A-P400 (5 PCS.)	1		
608	308-515	POLYESTER BUFF (3 PCS.)	1		