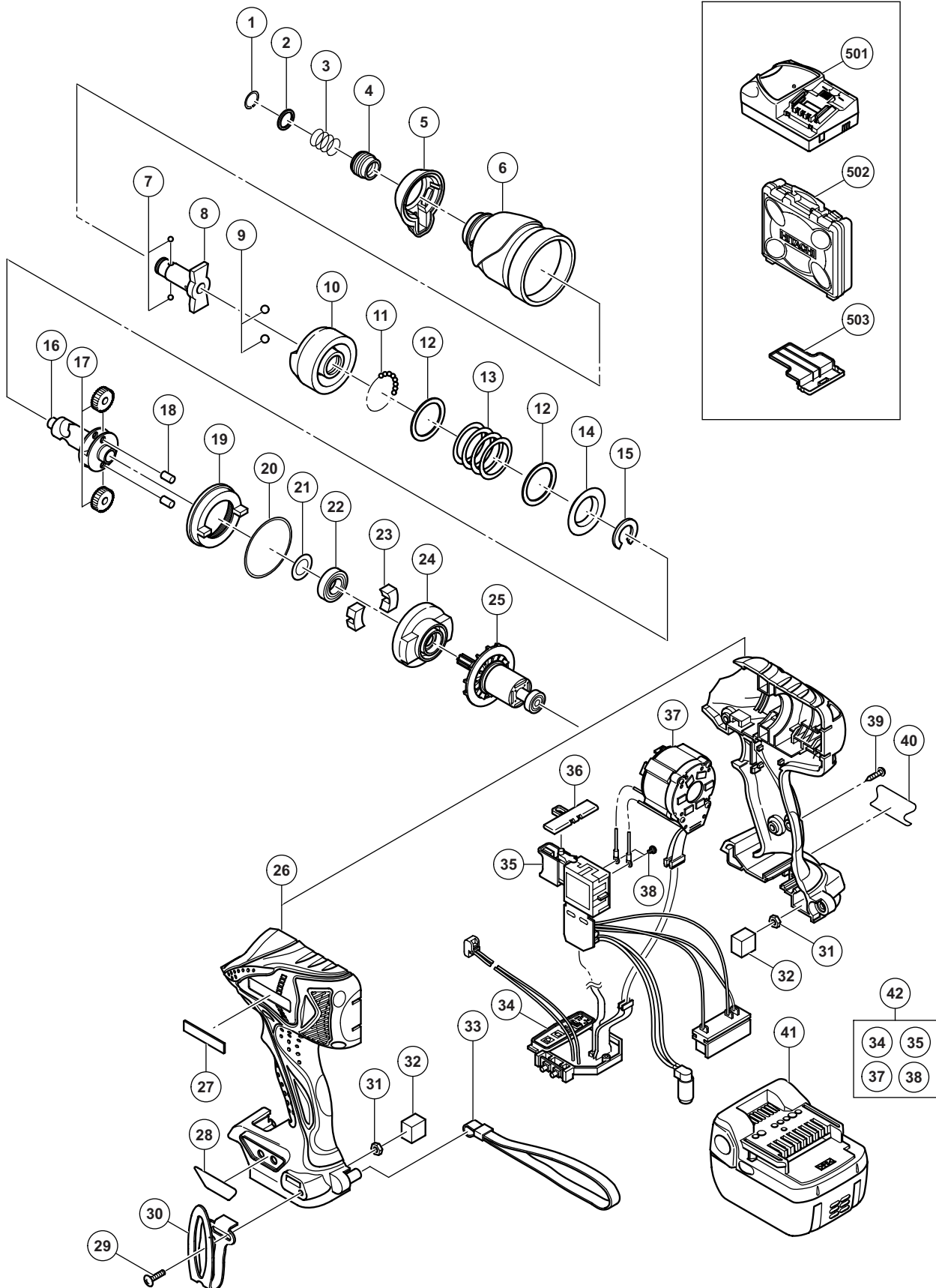


## ELECTRIC TOOL PARTS LIST

### ■ CORDLESS IMPACT DRIVER Model WH 14DBDL

2010·9·2  
(E1)



**PARTS**

WH 14DBDL

ITEM NO.	CODE NO.	DESCRIPTION	NO. USED	REMARKS	
1	330-619	RETAINING RING	1		
2	330-856	WASHER (D)	1		
3	331-284	GUIDE SPRING (D)	1		
4	322-717	GUIDE SLEEVE (D)	1		
5	332-198	FRONT CAP	1		
6	332-199	HAMMER CASE	1		
7	319-535	STEEL BALL D3.5 (10 PCS.)	2		
* 8	332-194	ANVIL (C)	1		
* 8	332-193	ANVIL (A)	1	FOR ASIA	
9	959-154	STEEL BALL D5.556 (10 PCS.)	2		
10	332-184	HAMMER	1		
11	959-148	STEEL BALL D3.175 (10 PCS.)	28		
12	315-978	WASHER (J)	2		
13	324-224	HAMMER SPRING (F)	1		
14	316-172	WASHER (S)	1		
15	316-171	STOPPER	1		
16	332-186	SPINDLE	1		
17	326-295	IDLE GEAR SET (2 PCS.)	2		
18	319-914	NEEDLE ROLLER	2		
19	326-787	RING GEAR(E)	1		
20	983-852	O-RING (S-42)	1		
21	319-911	WASHER (E)	1		
22	690-1VV	BALL BEARING 6901VVCMP2L	1		
23	324-230	DAMPER (A)	2		
24	332-185	INNER COVER	1		
25	332-188	ROTOR PINION	1		
26	332-190	HOUSING (A). (B) SET	1		
27	329-648	HITACHI PLATE	1		
28	332-207	PANEL SHEET (B)	1		
29	327-001	TRUSS HD. SCREW M4 (BLACK)	1		
30	330-666	HOOK	1		
31	327-002	LOCK NUT M4 (BLACK)	2		
32	330-854	PACKING	2		
33	306-952	STRAP (BLACK)	1		
34	332-206	CONTROLLER	1		
35	332-187	DC-SPEED CONTROL SWITCH	1		
36	324-225	PUSHING BUTTON (B)	1		
37	332-204	STATOR FET PCB	1		
38	994-532	MACHINE SCREW (W/SP. WASHER) M3 X 5	2		
39	301-653	TAPPING SCREW (W/FLANGE) D4 X 20 (BLACK)	9		
40		NAME PLATE	1		
41	329-083	BATTERY BSL 1430 (EUROPE, AUS, NZL)	2	INCLUD. 503	
42	332-202	WIRING ASS'Y	1	INCLUD. 34, 35, 37, 38	

**STANDARD ACCESSORIES**

WH 14DBDL

ITEM NO.	CODE NO.	DESCRIPTION	NO. USED	REMARKS
* 501		CHARGER (MODEL UC 18YRSL)	1	
* 501		CHARGER (MODEL UC 18YML2)	1	
502	330-592	CASE	1	
503	329-897	BATTERY COVER	1	

**OPTIONAL ACCESSORIES**

ITEM NO.	CODE NO.	DESCRIPTION	NO. USED	REMARKS
601	321-823	DRILL CHUCK AND ADAPTER SET	1	INCLUD. 616, 618
602	309-922	GREASE FOR IMPACT DRIVER (500G)	1	
603	992-671	+ DRIVER BIT (B) NO.2 50L	1	
604	992-672	+ DRIVER BIT (B) NO.3 50L	1	
605	996-177	NON-MAGNETIC HEX. SOCKET 8MM 65L	1	
606	985-329	NON-MAGNETIC HEX. SOCKET 10MM 65L	1	
607	996-178	NON-MAGNETIC HEX. SOCKET 12MM 65L	1	
608	996-179	NON-MAGNETIC HEX. SOCKET 13MM 65L	1	
609	996-180	NON-MAGNETIC HEX. SOCKET 14MM 65L	1	
610	996-185	NON-MAGNETIC HEX. SOCKET 15MM 65L	1	
611	996-181	NON-MAGNETIC HEX. SOCKET 16MM 65L	1	
612	996-182	NON-MAGNETIC HEX. SOCKET 17MM 65L	1	
613	996-186	NON-MAGNETIC HEX. SOCKET 19MM 65L	1	
614	996-197	HEX. SOCKET (LONG) 21MM X 166L	1	
615	996-184	BIT PIECE	1	
616	987-575	CHUCK WRENCH FOR 10VLB-D, 10VLR-D	1	
617	930-119	CHUCK WRENCH 6.5G	1	
618	307-543	CHUCK ADAPTER	1	

